

ROTEL®


PRODUCT CATALOG
2021

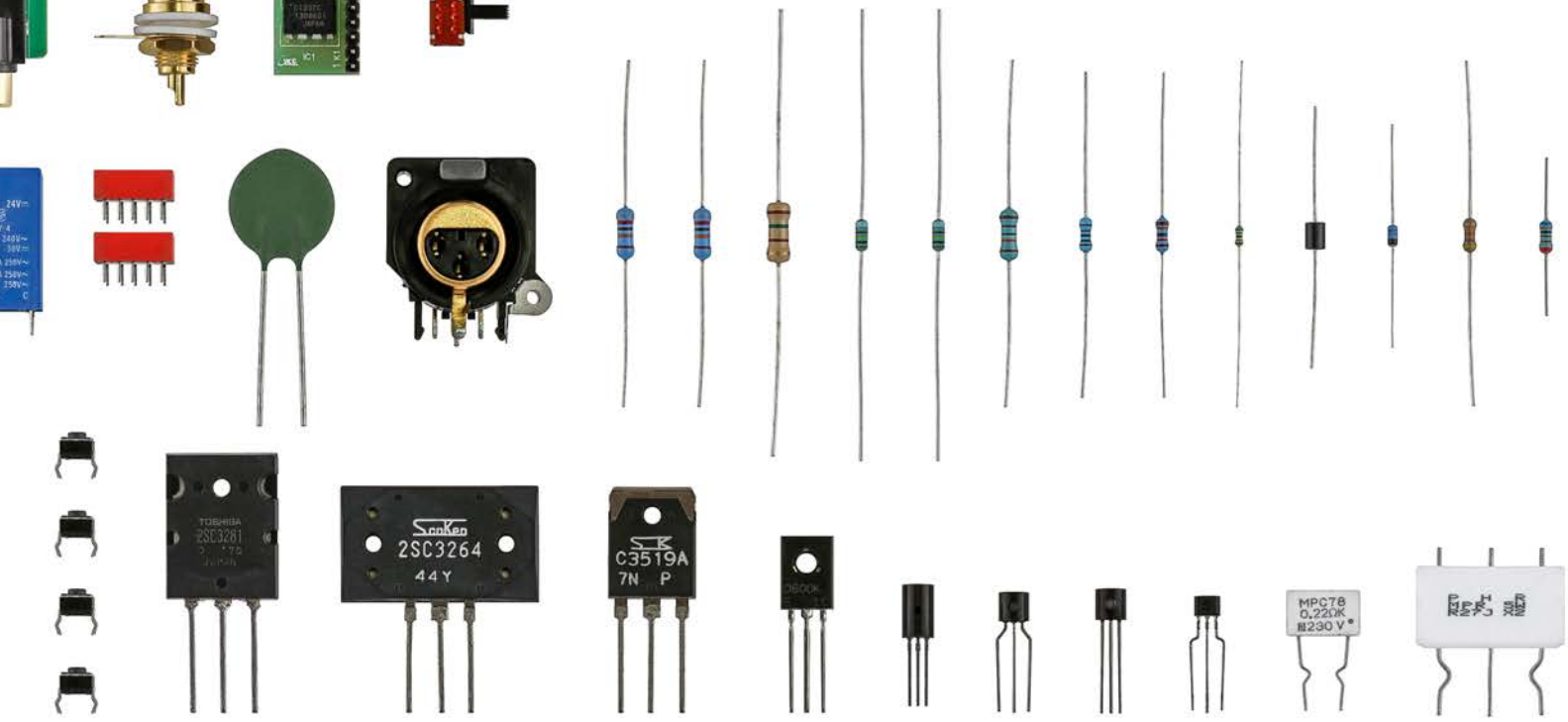




A11 Tribute Integrated Amplifier
CD11 Tribute CD Player

A Passion for Performance

- 6 HOME THEATER
 - 14 MUSIC SYSTEMS
 - 24 WHOLE HOUSE AUDIO
 - 28 SPECIFICATIONS
- 



WELCOME TO

Rotel

There is no substitute for experience. More than fifty-five years of designing, engineering, and manufacturing audio/video components has put us at the top of the audio field. We have always been a family owned business. That is why we take the time to build, test, and critically evaluate each new model before it goes into production. Our reputation is personal.



The transformer is the fundamental building block of a solid power supply. Rotel transformers are made in house ensuring we have complete control over the quality of this critical component.

HOME THEATER



Immerse Yourself



Ultra-high performance.

The RAP-1580MKII features separates performance in a single chassis.



RAP-1580MKII

The RAP-1580MKII is the ideal home theater solution delivering uncompromised audio and video performance supporting 7.1.4 Dolby Atmos and DTS:X processing with 7 channels of 140 Watts of Class AB output power into 4 ohm loads all channels driven and licensed for Dirac Live room correction ensuring optimal performance in any setting.

Supports Dolby® Atmos 7.1.4 processing

Decodes DTS:X 7.1.4 processing

Supports Dirac Live LE Room Correction

8 HDMI 2.0b inputs capable of 4K/UHD video pass-through

3 HDMI inputs and both HDMI outputs support HDCP 2.2

Bluetooth with apt-X

PC-USB input supporting 24-bit/192kHz audio

Moving Magnet Phono Stage Input

6 x Wolfson premium 24-bit/192kHz
Digital to Analogue Converters

7 x 140W class AB amplification

Available in Black and Silver



RAP-1580MKII Surround Amplified Processor



RSP-1576MKII Surround Processor

RMB-1555 Multichannel Amplifier

Maximum fidelity.

Envelops you in dramatic cinematic sound, but also does full justice to pure music listening.



RSP-1576MKII

The RSP-1576MKII has been custom engineered for music and movie lovers alike supporting 7.1.4 Dolby Atmos and DTS:X in vivid resolution. Replete with features including 14 audio inputs, 7x2 HDMI 4K/HDR video connections and fully licensed Dirac Live room correction this processor is sure to bring countless hours of entertainment.

Supports Dolby® Atmos 7.1.4 processing

Decodes DTS:X 7.1.4 processing

Supports Dirac Live Full Room Correction

7 HDMI 2.0b inputs capable of 4K/UHD video pass-through

7 HDMI inputs and both HDMI outputs support HDCP 2.2 and HDR 10

Bluetooth with apt-X

PC-USB input supporting 24-bit/192kHz audio

Balanced XLR inputs

Moving Magnet Phono Stage input for turntable connection

6 x Wolfson premium 24-bit/192kHz DACs

Rack ears included

Available in Black and Silver

Exceptional sound.

Rotel amplifiers excel at extracting all of the drama, suspense and action from your favorite movies and concerts.



RMB-1585

The pinnacle of performance in our superb multichannel power amplifier range, the RMB-1585 features 5 x 200 Watts to drive even the largest home theater speaker systems.

5 x 200 Watts of robust power

Class AB amplifier design

Massive power supply using Dual Toroidal Transformers

High quality slit foil capacitors made in Britain

Rack ears included

Available in Black and Silver

RMB-1555

With only slightly less power than its big brother, the RMB-1555 retains a very robust power supply to deliver 5 x 120 Watts per channel to medium and large home theaters.

5 x 120 Watts of robust power

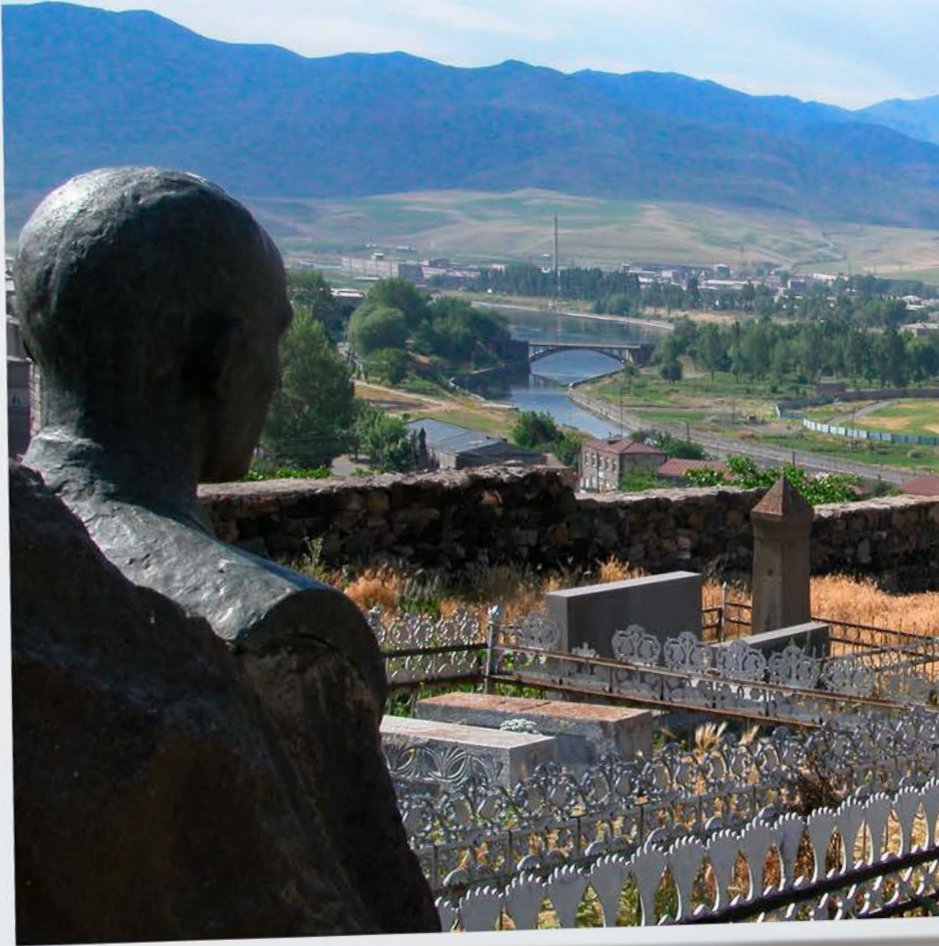
Class AB amplifier design

High quality slit foil capacitors made in Britain

12 volt trigger input

Rack ears included

Available in Black and Silver



MUSIC SYSTEMS



CD11 Tribute CD Player

A11 Tribute Integrated Amplifier

A photograph of a window with a view of a snowy landscape. The window frame is dark, and the view outside is bright and overexposed, showing a snow-covered ground and some distant structures. In the foreground, on the right side, there is a pink, curved object, possibly a piece of furniture or a decorative item. The text "Sound at its best" is overlaid on the window view.

Sound
at its best

Made for the modern listener.

All the connectivity you need and the advanced audiophile technology to really bring it to life.



RA-1592

The RA-1592 Integrated Amplifier leverages the strengths of our award winning RC-1590 preamplifier and RB-1582MKII power amplifier in a sleek single chassis design delivering 200W per channel.

2 x 200 Watts of robust Class AB power

Moving Magnet Phono Input

Bluetooth with aptX

AKM premium 32-bit/768kHz
Digital to Analogue Converter

Balanced XLR inputs

Available in Black and Silver



RA-1572

The RA-1572 combines proven analogue design with sophisticated digital circuits to bring all of your sources to life with amazing fidelity with 120-watts of Classic Rotel Class AB power.

2 x 120 Watts of robust Class AB power

Bluetooth with aptX

AKM premium 32-bit/768kHz
Digital to Analogue Converter

Moving Magnet Phono Input
for turntable connection

Available in Black and Silver



RA-1572 Integrated Amplifier



A14

The A14 is a high performance 80-watt per channel integrated amplifier delivering superb music reproduction featuring connections for both analogue and digital sources including aptX Bluetooth streaming.

2 x 80 Watts of robust Class AB power

Integrated Bluetooth aptX

AKM premium 32-bit/768kHz Digital to Analogue Converter

Moving Magnet Phono Input for turntable connection

Available in Black and Silver



A12

Rotel's A12 integrated amplifier offers impressive audio performance with Class AB 60watts per channel. Input connections include both analogue and digital, along with aptX Bluetooth streaming capability.

2 x 60 Watts of robust Class AB power

Front panel USB input for iOS devices

Bluetooth with aptX

Wolfson premium 24-bit/192kHz Digital to Analogue Converter

Moving Magnet Phono Input for turntable connection

Available in Black and Silver



A11 Tribute

The A11 Tribute is a Class AB 50W Integrated Amplifier developed in cooperation with the audio engineering legend Ken Ishiwata as a Tribute to his legacy.

2 x 50 Watts of classic Rotel Class AB power

Moving Magnet Phono Stage Input

4 RCA analog inputs

Bluetooth with aptX and AAC

Texas Instruments 24-bit/192kHz Digital to Analog Converter

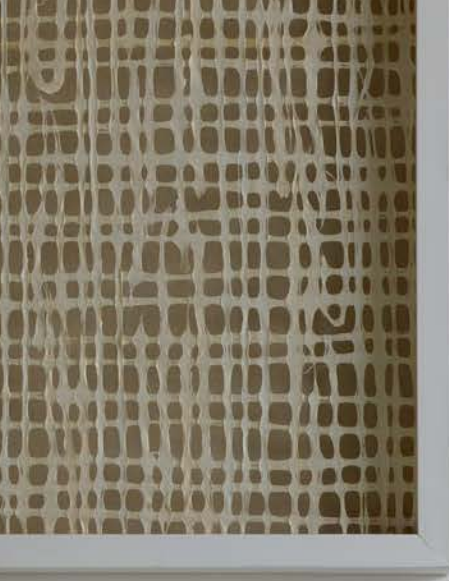
Dual A-B selectable speaker outputs

Available in Black and Silver

#musiclover



RA-1592 Integrated Amplifier





STEREO PREAMPLIFIERS

Control & flexibility.

From bluetooth to analogue turntables, CD players to digital streams, Rotel Preamplifiers allow you unprecedented control and flexibility to listen how you like.

RC-1572 Stereo Preamplifier
RB-1552 MKII Stereo Amplifier



RC-1590

For music enthusiasts who won't accept compromise, the reference RC-1590 preamplifier is in a class by itself.

AKM premium 32-bit/768kHz
Digital to Analogue Converter

Moving Magnet Phono Stage Input
for vinyl lovers

Bluetooth with aptX

Dual toroidal transformers isolate
the analogue and digital signal paths

Balanced XLR inputs and dual outputs

Available in Black and Silver



RC-1572

The RC-1572 provides an entryway into higher performing separate components with all of the analogue and digital inputs required by today's sources.

AKM premium 32-bit/768kHz
Digital to Analogue Converter

Bluetooth with aptX

Moving magnet phono input
for turntable connection

Balanced XLR inputs and outputs

Available in Black and Silver



CD PLAYERS

Elevating performance.

Refined technology and evolved circuitry will bring your CDs to life.

A11 Tribute Integrated Amplifier
CD11Tribute CD Player



RCD-1572

The culmination of more than three decades of Rotel CD technology refinement, the RCD-1572 is the flagship CD player in Rotel's 15 Series.

Wolfson premium 24-bit/192kHz Digital to Analogue Converter

Smooth action tray loading CD mechanism

Includes remote control

Balanced XLR outputs

Available in Black and Silver



CD14

Enjoy your CD collection investment with Rotel's CD14 compact disc player. As with all 14 series components, it features a high performance power supply and intuitive operation.

Wolfson premium 24-bit/192kHz Digital to Analogue Converter

Coaxial digital output connection

Includes remote control

12 volt trigger input

Available in Black and Silver



CD11Tribute

Rotel's CD11 Tribute CD player was engineered with hands-on support from audio legend Ken Ishiwata utilizing a custom selection of acoustically tuned components delivering an even higher level of performance and acoustic clarity.

Texas Instruments 24-bit 192kHz Digital to Analog converter

Tray loading CD mechanism

RCA analogue and Coaxial digital output

RS232 and 12V trigger input

Available in Black and Silver

Power & refinement.

Engineered to be robust, yet able to extract every last nuance out of even the most complex musical score.



RB-1590

The RB-1590 is at the top of its class as a 2 x 350 Watts stereo amplifier with dual toroidal transformers and high efficiency slit foil capacitors.

2 x 350 Watts of robust power

Class AB amplifier design

Massive power supply using
Dual Toroidal Transformers

High quality British slit foil capacitors

Balanced XLR inputs

Available in Black and Silver



RB-1582 MKII

At 2 x 200 Watts per channel and utilizing Rotel's Balanced Design Concept for superior performance, the RB-1582 MKII is a compelling stereo amplifier.

2 x 200 Watts of robust power

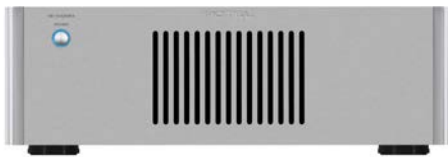
Class AB amplifier design

High performance, low ESR British slit foil capacitors

Balanced XLR inputs

Rack ears included

Available in Black and Silver



RB-1552 MKII

RB-1552 MKII is built upon the same platform as the RB-1582 MKII with a power output capability of 2 x 130 Watts.

2 x 130 Watts of robust power

Class AB amplifier design

High quality British engineered slit foil capacitors

Balanced XLR inputs

Rack ears included

Available in Black and Silver

Top notch listening.

Rotel tuners provide a wealth of high quality listening choices.



T14

The T14 provides a wealth of high quality listening choices, from over the air FM/DAB+ broadcasts to a wide variety of internet streaming services over Wifi courtesy of DTS Play-Fi.

DTS Play-Fi technology for wireless audio streaming

DAB+ tuning

iOS control App

TI 32 bit / 384 kHz DAC

RDS (Radio Data System) capability for FM broadcasts

Available in Black and Silver



T11 Tuner

A10 Integrated Amplifier



T11

Rotel's T11 is a high quality FM/DAB+ tuner with up to 30 station presets. It provides a wealth of free music listening options.

DAB+ tuning

RDS (Radio Data System) capability for FM broadcasts

Includes remote control

Available in Black and Silver

WHOLE HOUSE AUDIO



Music
everywhere





RMB-1512

No longer do you need to purchase several large amplifiers to obtain a high performance multizone audio system. The RMB-1512 features an advanced Class D design that provides plenty of power (12 x 100 Watts into 8 ohms) for the most demanding multizone audio systems, but never runs the danger of overheating itself or other electronic components placed in the same vicinity.

The RMB-1512 features everything needed for remote operation and custom installation including 12 volt trigger, signal sensing, input bussing, sum-to-mono, buffered link output, front panel attenuation controls, five-way binding posts and screw terminals.

12 x 100 Watts of robust power

Class D amplifier design

Automatic signal sensing

12 volt trigger input

Available in Black



RMB-1506

The RMB-1506 is perfect for less elaborate multizone audio systems and can be mated with our surround receiver or our preamp/processors to add music throughout three additional living areas or “zones” of your home. A buffered link output allows you to link additional amplifiers for larger multizone applications.

As with all Rotel custom amplifiers it includes the most wanted custom installation features such as front panel attenuation control, input linking, 12-volt trigger, buffered link output, five-way binding posts and an IEC detachable power cord.

6 x 50 Watts of robust power

Class AB amplifier design

Automatic signal sensing

12 volt trigger input

Available in Black



RMB-1504

The RMB-1504 Class AB 4-channel amplifier delivers on the ongoing commitment of performance without compromise building on over 55 years of RotoSound amplifier design and in-house manufacturing of Hi-Fi electronics. This amplifier provides the power and refinement suited for home theater installations as well as custom installation multi-room audio solutions.

4 x 70 Watts of robust power

Class AB amplifier design

Automatic signal sensing

12 volt trigger input

Available in Black

SPECIFICATIONS

RAP-1580MKII

Audio

Continuous Power Output

1k Hz, THD < 0.05%, 4 ohms	200 watts / channel (2 channels driven)
1k Hz, THD < 0.05%, 4 ohms	140 watts / channel (7 channels driven)
1k Hz, THD < 0.05%, 8 ohms	135 watts / channel (2 channels driven)
20 - 20k Hz, THD < 0.05%, 8 ohms	100 watts / channel (7 channels driven)

Total Harmonic Distortion < 0.05%

Intermodulation Distortion < 0.05%
(60 Hz : 7k Hz, 4:1)

Frequency Response

Phono Input	20 Hz - 20k Hz, ± 1 dB
Analog Bypass	10 Hz - 100k Hz, ± 1 dB
Digital Input	20 Hz - 20k Hz, ± 0.5 dB

Damping Factor (1k Hz, 8 ohms) 230

Signal to Noise Ratio (IHF A-weighted)

Analog Bypass	100 dB
Digital Input	96 dB

Input Sensitivity / Impedance

Phono Level	3.85 mV / 47k ohms
Line Level	300 mV / 100k ohms
Balance Level	600 mV / 100k ohms

Preamp Output Level 1.2 V

Digital Audio

LPCM (up to 24-bit / 192kHz)
Dolby® Surround, Dolby® TrueHD,
Dolby® Atmos, DTS-HD Master
Audio, DTS:X, Dirac Live LE

Video

Input Resolutions

480i/576i, 480p/576p, 720p, 1080i,
1080p, 1080p 24Hz, 3D, 4K, UHD

Output Resolution

480i/576i, 480p/576p, 720p, 1080i,
1080p, 1080p 24Hz, 3D, 4K, UHD

Color Space Support sRGB, YCbCr 4:2:2, YCbCr 4:4:4

Deep Color Support 24-bit, 30-bit, 36-bit

HDMI Inputs / Outputs 8 inputs with 3 supporting HDCP 2.2
2 outputs supporting HDCP 2.2
Audio Return Channel

RSP-1576MKII

Audio

Total Harmonic Distortion 0.0006% (Analog Bypass)
0.003% (Digital Input)

Intermodulation Distortion < 0.005%
(60 Hz : 7k Hz, 4:1)

Frequency Response

Phono Input	20 Hz - 20k Hz, ± 0.5 dB
Analog Bypass	10 Hz - 100k Hz, ± 1.0 dB
Digital Input	20 Hz - 20k Hz, ± 0.5 dB

Signal to Noise Ratio (IHF A-weighted)

Analog Bypass	112 dB
Digital Input	112 dB

Input Sensitivity / Impedance

Phono Level	3.5 mV / 47k ohms
Line Level	270 mV / 100k ohms
Balance Level	500 mV / 100k ohms

Preamp Output Level 1.0 V (Line Level)

Channel Separation > 75 dB (at 10k Hz)

Digital Audio

LPCM (up to 24-bit / 192kHz)
Dolby® Surround, Dolby® TrueHD,
Dolby® Atmos, DTS-HD Master Audio,
DTS:X, Dirac Live Full

Video

Input Resolutions

480i/576i, 480p/576p, 720p,
1080i, 1080p, 1080p 24Hz,
3D, 4K, UHD, 4K 60Hz, 4K HDR10

Output Resolution

480i/576i, 480p/576p, 720p,
1080i, 1080p, 1080p 24Hz,
3D, 4K, UHD, 4K 60Hz, 4K HDR10

Color Space Support sRGB, YCbCr 4:2:2, YCbCr 4:4:4

Deep Color Support 24-bit, 30-bit, 36-bit

HDMI Inputs / Outputs

7 inputs supporting HDCP 2.2, HDMI2.0b
2 outputs supporting HDCP 2.2, HDMI2.0b
Audio Return Channel

RMB-1585

Power Output

(all channels driven) 200 watts x 5 channels
(20 Hz-20k Hz, < 0.03% THD, 8 ohms)

Intermodulation Distortion < 0.03%
(60 Hz : 7k Hz, 4:1)

Damping Factor (8 ohms) 260

Gain 26.5 dB

Input Sensitivity / Impedance

Unbalanced (RCA)	1.9 V / 12k ohms
Balanced (XLR)	3.8 V / 100k ohms

Frequency Response 10 Hz - 100k Hz (± 3.0 dB)

Signal to Noise Ratio (IHF A-weighted) 116 dB

RMB-1555

Power Output

(all channels driven) 120 watts x 5 channels
(20 Hz-20k Hz, < 0.03% THD, 8 ohms)

Intermodulation Distortion < 0.03%
(60 Hz : 7k Hz, 4:1)

Damping Factor (8 ohms) 180

Gain 26.5 dB

Input Sensitivity / Impedance

1.5 V / 12k ohms

Frequency Response 10 Hz - 100k Hz (± 3.0 dB)

Signal to Noise Ratio (IHF A-weighted) 116 dB

RA-1592

Continuous Power Output (20 Hz - 20k Hz, < 0.03%, 8 ohms)	200 watts / channel
Total Harmonic Distortion (20 Hz - 20k Hz, 8 ohms)	< 0.03%
Intermodulation Distortion (60 Hz : 7k Hz, 4:1)	< 0.03%
Frequency Response	
Phono Input	20 Hz - 20k Hz, ± 0.5 dB
Line Level Inputs	10 Hz - 100k Hz, ± 0.5 dB
Damping Factor (20 Hz - 20k Hz, 8 ohms)	600
Input Sensitivity / Impedance	
Phono Input (MM)	5.2 mV / 47k ohms
Line Level Inputs (RCA)	340 mV / 100k ohms
Line Level Inputs (XLR)	540 mV / 100k ohms
Input Overload	
Phono Input (MM)	52 mV
Line Level Inputs (RCA)	3.5 V
Line Level Inputs (XLR)	5.5 V
Preamplifier Output / Impedance	1.9 V / 100 ohms
Signal to Noise Ratio (IHF A-weighted)	
Phono Input (MM)	80 dB
Line Level Inputs	103 dB
Digital Section	
Frequency Response	10 Hz - 90k Hz (± 2.0 dB, Max)
Signal to Noise Ratio (IHF A-weighted)	102 dB
Input Sensitivity / Impedance	0 dBfs / 75 ohms
Preamplifier Output Level	1.4 V (at -20 dB)
Coaxial / Optical Digital Signals	SPDIF LPCM (up to 24-bit / 192k Hz)
PC-USB	USB Audio Class 1.0 (up to 24-bit / 96k Hz) USB Audio Class 2.0 (up to 32-bit / 384k Hz)* *Driver installation required DSD and DoP support

RA-1572

Continuous Power Output (20 Hz - 20k Hz, < 0.03%, 8 ohms)	120 watts / channel
Total Harmonic Distortion (20 Hz - 20k Hz, 8 ohms)	< 0.03%
Intermodulation Distortion (60 Hz : 7k Hz, 4:1)	< 0.03%
Frequency Response	
Phono Input	20 Hz - 20k Hz, ± 0.5 dB
Line Level Inputs	10 Hz - 100k Hz, ± 0.5 dB
Damping Factor (20 Hz - 20k Hz, 8 ohms)	300
Input Sensitivity / Impedance	
Phono Input (MM)	2.1 mV / 47k ohms
Line Level Inputs (RCA)	270 mV / 100k ohms
Line Level Inputs (XLR)	440 mV / 100k ohms
Input Overload	
Phono Input (MM)	32 mV
Line Level Inputs (RCA)	4 V
Line Level Inputs (XLR)	5.5 V
Preamplifier Output / Impedance	1.5 V / 470 ohms
Signal to Noise Ratio (IHF A-weighted)	
Phono Input (MM)	80 dB
Line Level Inputs	100 dB
Digital Section	
Frequency Response	10 Hz - 90k Hz (± 2.0 dB, Max)
Signal to Noise Ratio (IHF A-weighted)	100 dB
Input Sensitivity / Impedance	0 dBfs / 75 ohms
Preamplifier Output Level	1.3 V (at -20 dB)
Digital Inputs	SPDIF LPCM (up to 24-bit / 192k Hz)
PC-USB	USB Audio Class 1.0 (up to 24-bit / 96k Hz) USB Audio Class 2.0 (up to 32-bit / 384k Hz)* *Driver installation required DSD and DoP support

SPECIFICATIONS

	A14	A12	A11 Tribute
Continuous Power Output (20 Hz - 20k Hz, < 0.03%, 8 ohms)	80 watts / channel	60 watts / channel	50 watts / channel
Total Harmonic Distortion (20 Hz - 20k Hz, 8 ohms)	< 0.03%	< 0.03%	< 0.03%
Intermodulation Distortion (60 Hz : 7k Hz, 4:1)	< 0.03%	< 0.03%	< 0.03%
Frequency Response			
Phono Input	20 Hz - 20k Hz, ± 0.5 dB	20 Hz - 20k Hz, ± 0.5 dB	20Hz - 20k Hz, ± 0.5 dB
Line Level Inputs	10 Hz - 100k Hz, ± 0.5 dB	10 Hz - 100k Hz, ± 0.5 dB	10Hz - 100k Hz, ± 0.5 dB
Damping Factor (20 Hz - 20k Hz, 8 ohms)	220	220	140
Input Sensitivity / Impedance			
Phono Input	3.4 mV / 47k ohms	3 mV / 47k ohms	2.3 mV / 47k Ohms
Line Level Inputs	230 mV / 24k ohms	200 mV / 24k ohms	180 mV / 47k Ohms
Input Overload			
Phono Input	50 mV	50 mV	50 mV
Line Level Inputs	4 V	4 V	4 V
Preamplifier Output / Impedance	1.2 V / 470 ohms	1 V / 470 ohms	1 V / 470 Ohms
Tone Controls - Bass / Treble	± 10 dB at 100 Hz / 10k Hz	± 10 dB at 100 Hz / 10k Hz	± 10 dB at 100 Hz / 10k Hz
Signal to Noise Ratio (IHF A-weighted)			
Phono Input	90 dB	90 dB	85 dB
Line Level Inputs	100 dB	100 dB	100 dB
Digital Section			
Frequency Response	10 Hz - 80k Hz (± 3.0 dB, Max)	10 Hz - 80k Hz (± 3.0 dB, Max)	
Signal to Noise Ratio (IHF A-weighted)	103 dB	103 dB	
Input Sensitivity / Impedance	0 dBfs / 75 ohms	0 dBfs / 75 ohms	
Preamplifier Output Level	1.3 V (at - 20 dB)	1.3 V (at - 20 dB)	
Digital Inputs	SPDIF LPCM (up to 24-bit / 192k Hz)	SPDIF LPCM (up to 24-bit / 192k Hz)	
PC-USB	USB Audio Class 1.0 (up to 24-bit / 96k Hz) USB Audio Class 2.0 (up to 32 bit / 384k Hz)* *Driver installation required DSD and DoP support	USB Audio Class 1.0 (up to 24-bit / 96k Hz) USB Audio Class 2.0 (up to 24-bit / 192k Hz)* *Driver installation required	

RCD-1572

Total Harmonic Distortion + Noise	0.002% @ 1k Hz
Frequency Response	20 Hz - 20k Hz (± 0.5 dB)
Channel Balance	± 0.5 dB
Channel Separation	> 115 dB @ 10k Hz
Signal to Noise Ratio (IHF A-weighted)	> 118 dB
Dynamic Range	> 99 dB
Digital to Analog Converters	Wolfson 24-bit / 192k Hz DAC
Analog Output Level / Impedance (0dBfs)	
Unbalanced (RCA)	2.2 V / 100 ohms
Balanced (XLR)	4.4 V / 200 ohms
Digital Output Level	0.5 V, Peak to Peak
Load Impedance	75 ohms

CD14

Total Harmonic Distortion + Noise	0.002% @ 1k Hz
Intermodulation Distortion	0.002% @ 1k Hz
Frequency Response	20 Hz - 20k Hz (± 0.5 dB)
Channel Balance	± 0.5 dB
Phase Linearity	± 0.5 degree
Channel Separation	> 115 dB @ 10k Hz
Signal to Noise Ratio (IHF A-weighted)	> 118 dB
Dynamic Range	> 99 dB
Digital to Analog Converters	Wolfson 24-bit / 192k Hz DAC
Analog Output Impedance	100 ohms
Digital Output Level	0.5 V, Peak to Peak
Load Impedance	75 ohms

CD11 Tribute

Total Harmonic Distortion + Noise	0.009% @ 1k Hz
Intermodulation Distortion	0.009% @ 1k Hz
Frequency Response	20-20,000 Hz
Channel Balance	± 0.5 db
Phase Linearity	± 0.5 degree
Channel Separation	> 115 dB @ 10k Hz
Signal to Noise Ratio	> 125 dB
Dynamic Range	> 99 dB
Digital to Analog Converters	Texas Instruments 24-bit / 192k Hz DAC
Analog Output Impedance	470 Ohms
Digital Output Level	0.5 Volt, Peak to Peak
Load Impedance	75 Ohms

RC-1590

Total Harmonic Distortion (20 Hz - 20k Hz)	< 0.002%
Input Sensitivity / Impedance	
Phono Input (MM)	2.5 mV / 47k ohms
Line Level Inputs (RCA)	150 mV / 100k ohms
Line Level Inputs (XLR)	250 mV / 100k ohms
Output Level	
Line Level (RCA)	1 V
Balanced (XLR)	2 V
Frequency Response	
Phono Input	20 Hz - 20k Hz, \pm 0.2 dB
Line Level Inputs	10 Hz - 100k Hz, \pm 0.1 dB
Signal to Noise Ratio (IHF A-weighted)	
Phono Input	80 dB
Line Level Inputs	112 dB
Channel Separation	
Phono Input	> 75 dB
Line Level Inputs	> 75 dB
Digital Section	
Frequency Response	20 Hz - 20k Hz, (\pm 0.5 dB, Max)
Signal to Noise Ratio (IHF A-weighted)	108 dB
Digital Inputs	SPDIF LPCM (up to 24-bit / 192k Hz)
PC-USB	USB Audio Class 1.0 (up to 24-bit / 96k Hz) USB Audio Class 2.0 (up to 24-bit / 192k Hz)* *Driver installation required DSD and DoP support

RC-1572

Total Harmonic Distortion (20 Hz - 20k Hz)	< 0.004%
Intermodulation Distortion (60 Hz : 7k Hz, 4:1)	< 0.004%
Input Sensitivity / Impedance	
Phono Input (MM)	3 mV / 47k ohms
Line Level Inputs (RCA)	200 mV / 100k ohms
Line Level Inputs (XLR)	300 mV / 100k ohms
Input Overload	
Phono Input	62 mV
Line Level Inputs	4 V
Output Level	
Line Level (RCA)	1 V
Balanced (XLR)	2 V
Frequency Response	
Phono Input	20 Hz - 20k Hz, \pm 0.3 dB
Line Level Inputs	10 Hz - 100k Hz, \pm 0.3 dB
Tone Controls	
Bass	\pm 10 dB at 100 Hz
Treble	\pm 10 dB at 10k Hz
Signal to Noise Ratio (IHF A-weighted)	
Phono Input	80 dB
Line Level Inputs	110 dB
Channel Separation	> 64 dB
Digital Section	
Frequency Response	20 Hz - 20k Hz (\pm 0.5 dB Max)
Signal to Noise Ratio (IHF A-weighted)	100 dB
Input Sensitivity / Impedance	0 dBfs / 75 ohms
Digital Inputs	SPDIF LPCM (up to 24-bit / 192k Hz)
PC-USB	USB Audio Class 1.0 (up to 24-bit / 96k Hz) USB Audio Class 2.0 (up to 32-bit / 384k Hz)* *Driver installation required DSD and DoP support

RB-1590

Power Output (all channels driven)	350 watts x 2 channels (20 Hz - 20k Hz, < 0.03%, 8 ohms)
Intermodulation Distortion (60 Hz : 7k Hz, 4:1)	< 0.03%
Damping Factor (8 ohms)	300
Input Sensitivity / Impedance	
Unbalanced (RCA)	2.2 V / 12k ohms
Balanced (XLR)	3.5 V / 100k ohms
Frequency Response	10 Hz - 100k Hz (\pm 0.5 dB)
Signal to Noise Ratio (IHF A-weighted)	120 dB
Gain	
Unbalanced (RCA)	27.5 dB (\pm 0.5 dB)
Balanced (XLR)	23.5 dB (\pm 0.5 dB)

RB-1582 MKII

Power Output (all channels driven)	200 watts x 2 channels (20 Hz - 20k Hz, < 0.03% THD, 8 ohms)
Intermodulation Distortion (60 Hz : 7k Hz, 4:1)	< 0.03%
Damping Factor (8 ohms)	800
Input Sensitivity / Impedance	
Unbalanced (RCA)	1.9 V / 12k ohms
Balanced (XLR)	3.0 V / 100k ohms
Frequency Response	10 Hz - 100k Hz (\pm 0.5 dB)
Signal to Noise Ratio (IHF A-weighted)	116 dB
Gain	
Unbalanced (RCA)	26.5 dB (\pm 0.5 dB)
Balanced (XLR)	22.5 dB (\pm 0.5 dB)

RB-1552 MKII

Power Output (all channels driven)	130 watts x 2 channels (20 Hz - 20k Hz, < 0.03% THD, 8 ohms)
Intermodulation Distortion (60 Hz : 7k Hz, 4:1)	< 0.03%
Damping Factor (8 ohms)	450
Input Sensitivity / Impedance	
Unbalanced (RCA)	1.5 V / 12k ohms
Balanced (XLR)	2.5 V / 100k ohms
Frequency Response	10 Hz - 100k Hz (\pm 0.5 dB)
Signal to Noise Ratio (IHF A-weighted)	120 dB
Gain	
Unbalanced (RCA)	26.5 dB (\pm 0.5 dB)
Balanced (XLR)	22.5 dB (\pm 0.5 dB)

SPECIFICATIONS

	T14	T11
FM Tuner		
Usable Sensitivity	22.2 dBf	22.2 dBf
50dB Quieting Sensitivity	27.2 dBf (mono)	27.2 dBf (mono)
Signal to Noise Ratio		
Mono	65 dBf (at 70 dBf)	63 dBf (at 65 dBf)
Stereo	60 dBf (at 70 dBf)	60 dBf (at 65 dBf)
Harmonic Distortion		
Mono	0.2% (at 70 dBf)	0.2% (at 65 dBf)
Stereo	0.3% (at 70 dBf)	0.3% (at 65 dBf)
Frequency Response	10 Hz - 15k Hz, ± 3.0 dB	10 Hz - 15k Hz, ± 3.0 dB
Stereo Separation (100 Hz / 1kHz)	35 dB / 30 dB	40 dB / 37 dB
Output Level	1.4 V	1.0 V
Antenna Input	75 ohms F connector	75 ohms F connector
DAB Tuner		
Sensitivity	-80 dBm	-80 dBm
Tuning Range	Band III (174 - 240M Hz)	Band III (174 - 240M Hz)
Audio Data Rate	224kbps (Max)	224kbps (Max)
Frequency Response	20 Hz - 20k Hz, ± 0.2 dB	20 Hz - 20k Hz, ± 1.0 dB
Analog Output	2.1 V at 0 dBFS	2.1 V at 0 dBFS
Antenna Input	75 ohms F connector	75 ohms F connector

	RMB-1512	RMB-1506	RMB-1504
Power Output			
(all channels driven)	100 watts x 12 channels (20 Hz-20k Hz, < 0.03% THD, 8 ohms) 200 watts x 12 channels (20 Hz-20k Hz, < 0.03% THD, 4 ohms)	50 watts x 6 channels (20 Hz-20k Hz, < 0.03% THD, 8 ohms) 80 watts x 6 channels (DIN 1K Hz, 1.0% THD)	70 watts x 4 channels (20 Hz-20k Hz, < 0.03% THD, 8 ohms)
Intermodulation Distortion (60 Hz : 7k Hz, 4:1)	< 0.03%	< 0.03%	< 0.03%
Damping Factor (8 ohms)	200	> 200	> 200
Gain	27.2 dB	26 dB	26 dB
Input Sensitivity / Impedance	1.25 V / 8.3k ohms	1.0 V / 20k ohms	1.0 V / 20k ohms
Frequency Response	10 Hz - 40k Hz (±1 dB)	10 Hz - 100k Hz (±1 dB)	10 Hz - 100k Hz (±1 dB)
Signal to Noise Ratio (IHF A-weighted)	105 dB	115 dB	115 dB

Rotel United Kingdom

B&W Group Ltd
Dale Road
Worthing, West Sussex
BN11 2BH, United Kingdom
T +44 (0) 1903 221 500
info-uk@bowerswilkins.com

Rotel Deutschland

B&W Group Germany GmbH
Kleine Heide 12
33790 Halle/Westfalen
Germany
T +49 (0) 5201 871 70
info-de@bowerswilkins.com

Rotel France

B&W Group France
15 Quai Pierre Scize
69009 Lyon, France
T +33 (0) 4 3746 1500
info-fr@bowerswilkins.com

Rotel Spain

B&W Group Spain
C/ Roselló, 362-364
08025 Barcelona, Spain
T +00.34 93.829.30.01
info-es@bowerswilkins.com

Rotel Finland

B&W Group Finland Oy
Uudenmaakatu 4- 6
00120 Helsinki, Finland
T +358 (0) 20 7430 075
info-fi@bowerswilkins.com

Rotel Switzerland

B&W Group (Schweiz) GmbH
Ifangstrasse 5
8952 Schlieren
Switzerland
T +41 (0) 43 433 6150
info-ch@bowerswilkins.com

Rotel Benelux

Godefriduskaai 14
2000 Antwerpen
Belgium
NL: + 31 20 5602940
info-nl@bowerswilkins.com
BE: + 32 3 2067550
info-be@bowerswilkins.com

Not all Rotel models are available in every market. Contact an authorized Rotel dealer or local distributor for more information.

For a full list of Rotel distributors worldwide visit www.rotel.com

Apple is a trademark of Apple Inc.

Dolby, Dolby Atmos, and the double-D symbol are registered trademarks of Dolby Laboratories Licensing Corporation. Manufactured under license from Dolby Laboratories. Confidential unpublished works. Copyright © 2012-2020 Dolby Laboratories. All rights reserved.

Copyright © Rotel.

Rotel reserves the right to amend details of the specifications without notice in line with technical developments. E&OE.



rotel.com

