

Important! Read before operating this equipment!

Read these instructions.  
Keep these instructions.  
Heed all warnings.  
Follow all instructions.  
Clean only with a dry cloth.  
Install in accordance with the manufacturer's instructions.  
Refer all servicing to qualified service personnel.  
There are no user-serviceable parts.  
Do not place the product in continuous sunlight or near naked flames.  
Check local regulations concerning the use of mobile phones when driving before using the soundBuds in a car.  
Exercise caution when using soundBuds in a manner that may cause danger to you if you cannot clearly hear your surroundings.

Never use the soundBuds in areas where radio devices are not permitted.  
Batteries (a battery pack or installed batteries) shall not be subject to excessive heat such as sunshine, fire or the like.  
Do not service the internal battery. Have it examined (and replaced if needed) by a competent service centre.



To prevent possible hearing damage, do not listen at high volume levels for long periods.

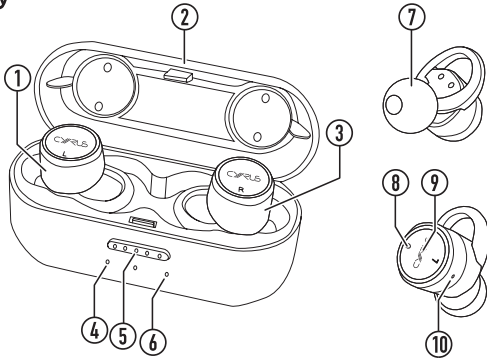
Important! Before first use

Follow the instructions in the 'Operation' section to charge the soundBuds and charging case fully before first use. If the soundBuds are fully discharged there may be a delay before the indicators light.

Legal notices

The Bluetooth® word mark and logos are registered trademarks owned by Bluetooth SIG, Inc. and any use of such marks by Cyrus is under license. Other trademarks and trade names are those of their respective owners.

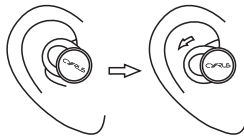
Key



- 1. Left soundBud
- 2. Charging case cover
- 3. Right soundBud
- 4. Case fully charged indicator
- 5. Cover catch
- 6. Case charging indicator
- 7. In-ear tip
- 8. Multi-function indicator
- 9. Multi-function button
- 10. Microphone

Fitting

- Unpack the left and right soundBuds from the charging case.
- Fit each of them in your ears as shown.
- Rotating the soundBuds backwards will secure them in your ears.

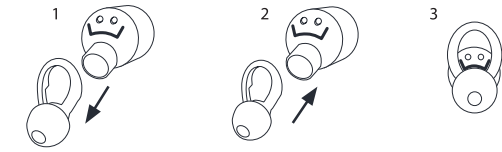


- Check the fit. The in-ear tip should provide a comfortable 'seal' in your ear. If they are too tight or too loose in your ear to be a comfortable fit, try one of the alternative in-ear tips.
- Audio performance can suffer if the fit is not correct.

Changing the soundBud in-ear tips

- The in-ear tips are a push fit on the soundBuds. Gently pull the in-ear tip from the earbud as shown.
- Select a size and push the new in-ear tip onto the soundBud.
- Ensure that the in-ear tip is seated on the soundBud correctly with the in-ear tip seated on the guide as shown.

NOTE: If the in-ear tip is incorrectly fitted, the soundBud may not charge.



Multi-Function button

The Multi-function button is used for power control, pairing, track navigation and answering phone calls.

Function	Action
On/Off	Press for 3 seconds to turn on or off.
Play/Pause	Press repeatedly to play/pause. Use your mobile phone to adjust the volume level.
Previous track	Double click the button on the left soundBud to play the previous track.
Next track	Double click the button on the right soundBud to play the next track.
Receiving a phone call	Click the button on either soundBud during an incoming call.
Ending a call	Click the button on either soundBud during a call to end the call.
Rejecting a call	Double click the button on either soundBud to reject an incoming call.

Operation

Stereo listening

For first time use.

- Remove the soundBuds from the charging case.
- Press down the Multi-function button on both soundBuds at the same time for 3 seconds.

The red and blue lights will flash intermittently.

After 3 to 5 seconds, the left and right soundBuds will automatically connect with each other, with the left soundBud pulsing blue and the right soundBud flashing red and blue.

- Turn on the mobile phone's **Bluetooth** function to search for a new device.
- Select 'Cyrus soundbuds'.

After successful connection, both soundBuds will pulse blue. You can now listen to music or make phone calls.

Using a single soundBud

The left soundBud can be used to make hands-free phone calls.

- Hold the Multi-function button of the left soundBud for 3 seconds. The indicator will flash red/blue.

- Turn on the mobile phone's **Bluetooth** function to search for a new device.
- Select 'L channel'.

The soundBud will connect to the mobile phone.

After successful connection, you can make hands-free phone calls.

Charging the soundBuds

The charging case includes a storage battery. When charge is available in the charging case the soundBuds will re-charge when placed in the charging case.

- Press the button on the charging case to open the lid.
- Place the soundBuds into the case.
- Close the lid.

The soundBuds will charge.

The indicators on the soundBuds will light red when charging and extinguish when fully charged. The indicators are visible through the charging case lid.

NOTE: If the soundBuds are fully discharged there may be a delay before the indicators light up.

### Charging the charging case

If the soundBuds do not light red when placed in the charging case, then there is no power remaining in the charging case and it should be charged. The charging case can be charged whether the soundBuds are in the case or not.

- Connect the charging cable (supplied) to the inlet on the side of the charging case.
- Connect the USB plug on the charging cable to a USB outlet on a computer or a USB charger.
- The 'Charging' indicator on the case will light red.
- When the case is fully charged the 'Fully charged' indicator will light blue.

NOTE: A USB charger will generally give a shorter charge time than a computer USB port.

### Specification

#### Model name

Full model name..... Cyrus soundBuds/MH-802

#### Earphones

**Bluetooth** specification: ... **Bluetooth** V4.2 HFP V1.7, HSP V1.2 A2DP V1.3  
ACRCP V1.6

Standby time:..... Approximately 80 hours

Talking time:..... Approximately 3 hours

Playing time:..... 2-2.5 hours (depending on volume and music content)

Frequency range:..... Earphones: 20-20kHz  
Microphone: 50-8kHz

Earphone battery:..... Lithium-ion, 55mAh

IP rating:..... IPX5

Range:..... up to 10 m, free air

Weight:..... 2 x 4.5g

#### Charging case

Battery:..... Lithium-ion, 400mAh

Weight:..... 51.8g



### Troubleshooting

#### The soundBuds will not switch on.

- The batteries may be discharged. Re-charge them according to the instructions in the 'Operation' section.

#### Unable to pair.

- Place the soundBuds next to your mobile device. Check that all devices are switched on. Check that the **Bluetooth** function is enabled on your mobile device.

#### The battery in the charging case does not charge.

- If you are charging from a computer, check that it is switched on and not in standby mode.
- Check that the Micro-USB cable is properly connected to both the charging case and the computer/charger.

#### The soundBud batteries are not charging

- Check that the charging case is charged.
- Check that the earphones are positioned correctly in the charging case with their contacts mating with the charging pins in the case.
- Check that the lid of the charging case is properly closed.
- If you have not charged your earphones for a long time, it can take up to 15 minutes for the LED light indicators to start shining red after charging has commenced.

#### No sound or poor quality sound

- Check that the **Bluetooth** device is connected to the soundBuds.
- Check that the volume is turned up on the connected **Bluetooth** device.
- Make sure that the **Bluetooth** device is in within reception range of the soundBuds.
- Disconnect the **Bluetooth** device from the soundBuds and check it is playing sound correctly.
- Make sure that no other **Bluetooth** device is disrupting your **Bluetooth** connection.
- Try an alternative in-ear tip size to ensure a good "seal" of the soundbuds within your ear.

#### Cyrus Audio

Cyrus Audio is an internationally-acclaimed high-end audio company in Cambridgeshire, England. If you would like to learn more about our range, our design philosophies and our unique technologies, then visit us at [www.cyrusaudio.com](http://www.cyrusaudio.com).

### Warranty

The warranty period is one year.

Please retain the sales receipt as proof of purchase.

Warranty claims must wherever possible be made through the retailer from whom the equipment was purchased.

This warranty excludes:

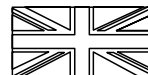
- Damage caused through neglect, accident, misuse, wear and tear, or through incorrect installation, adjustment or repair by unauthorised personnel. Any unauthorised servicing will result in loss of warranty.
- Liability for damage or loss occurring in transit to or from the purchaser.
- Consequential damage, loss or injury, arising from or in conjunction with this equipment.

Equipment for attention under warranty should be consigned return carriage paid. If returned equipment is found to comply with the published specification, CYRUS reserves the right to raise a charge. The above conditions do not affect your statutory rights as a consumer.

#### WEEE

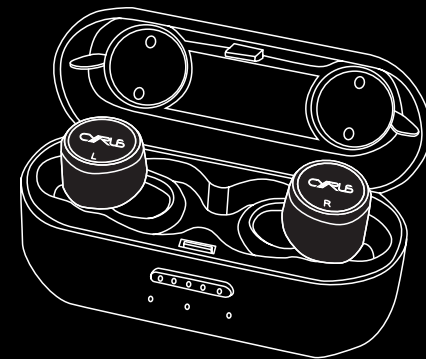


This logo means that this product is not to be disposed of with your household waste. This product should be handed over to a designated collection point to be recycled. Your cooperation in the correct disposal of this product will contribute to the effective usage of natural resources. For more information on collection points, contact your disposal service or City Council.



Made in China  
[www.cyrusaudio.com](http://www.cyrusaudio.com)

# soundbuds



# CYRUS