

Because of its powerful amplifier channels and high-capacity power supply, the Theater 7 will benefit from a dedicated AC circuit. Avoid connections through extension cords or multiple AC adapters. High quality 20 amp AC strips are acceptable. Please contact your authorized Krell dealer or distributor before using any devices designed to alter or stabilize the AC power.

Connecting the Theater 7 Amplifier to Your System

Krell recommends using balanced interconnect cables. Balanced interconnect cables not only can minimize sonic loss but are also immune to induced noise, especially with installations using long cables. Balanced connections have 6 dB more gain than single-ended connections. When level matching is critical, keep this gain value in mind. When using single-ended connections, the U-clips must be installed in the channel's corresponding XLR jack between pins 1-3.

Follow these steps to connect the Theater 7 amplifier to your system.

1. Make sure all power sources and components are off before connecting inputs and outputs.
2. Neatly organize the wiring between the Theater 7 and all system components. Separate AC wires from audio cables to prevent hum or other unwanted noises from being introduced into the system.
3. Connect the loudspeaker cables to the appropriate channel's binding post terminals, paying attention to the correct polarity.
4. Connect the outputs of your preamplifier or processor to the appropriate input jacks. Krell recommends following the channel assignments on the rear panel for best sound.
5. Plug the AC cord into the IEC connector (19) on the back panel of the iBias amplifier. Plug the remaining end into the AC wall receptacle. Move the Power Breaker Switch on the rear panel to the up position. The red stand-by indicator (2) illuminates and the display shows the model number, firmware version, serial number, and IP address.

Note:

Use only the power cord provided with the Theater 7 amplifier to make the connection to AC power. Operation with a power cord other than the one supplied by Krell can induce noise, limit current, or otherwise impair the ability of the Theater 7 amplifier to perform optimally.

Operating the Theater 7 Amplifier

When powering up any system, always turn amplifiers on last.
When powering down, always turn amplifiers off first.

1. When the amplifier is in stand-by mode, with the red stand-by indicator (2) illuminated, turn the amplifier on by pressing the power button on the front panel (1). There are audible clicks. The blue power indicator (2) illuminates. The display will show the IP Address and model number and then turn off. The Theater 7 amplifier is now in the operational mode.
2. With the preamplifier or processor in the mute position, or the volume control fully attenuated, select a source.
3. Start playing the source.
4. Set the volume to a comfortable listening level using the preamplifier or processor volume control.
5. To turn the amplifier off, press the power button on the front panel (1). The red stand-by indicator (2) illuminates.
It is now safe to turn off the rest of the system.

MODEL: _____ SERIAL NUMBER: _____



Theater 7 Power Amplifier SETUP GUIDE

Getting Started

Krell's history is rich with breakthrough Class A amplifiers that have helped build the Krell legacy of offering the best sounding amplifiers available. Audiophiles have always considered Class A technology to be the best sounding operating state for amplifiers. However, despite Class A's unrivaled sound quality, it has fallen out of fashion because of recent demands to reduce power consumption and heat in home electronics products. Krell engineering took this challenge and redefined the meaning of high performance power amplifier. Our goal – unmatched performance, elegant design, and a compelling array of features. The breakthrough, iBias, a patent pending circuit delivering Class A operation without the excessive heat and wasted energy of conventional designs, housed in a striking new form factor, with network connectivity for advanced access and monitoring. The sound is open and unconstrained, in a manner that rivals live performance and the true sound of voices and instruments. Music and dialogue are reproduced with a richness, detail, and startling dynamics that fill a room. The Theater 7 amplifier is easy to operate and integrate into your system.

Overview



WARNINGS



This product complies with the EMC directive (89/336/EEC) and the low-voltage directive (73/23/EEC).

This CLASS 1 apparatus must be connected to a MAINS socket outlet with a protective earthing connection.

Do not place the amplifier where it could be exposed to dripping or splashing.

Do not remove or bypass the ground pin on the end of the AC cord. This may cause radio frequency interference (RFI) to be introduced into your playback system.

The ventilation slots on the top and bottom of the amplifier as well as the fan openings on the bottom must be unobstructed at all times during operation. Do not place flammable material on top of or beneath the component.

Turn off all systems' power before connecting the amplifier to any component.

Make sure all cable terminations are of the highest quality, free from frayed ends, short circuits, or cold solder joints.

THERE ARE NO USER-SERVICEABLE PARTS INSIDE ANY KRELL PRODUCT.

Unpacking

Note

Save all packing materials. If you need to ship the iBias amplifier in the future, repack the unit in its original packaging to prevent shipping damage.

1. Open the shipping box and remove the top layer of foam. You will see these items:

- 1 Theater 7 amplifier chassis
- 1 IEC connector (AC power) cord
- 1 12V Trigger cable
- 1 Setup Guide

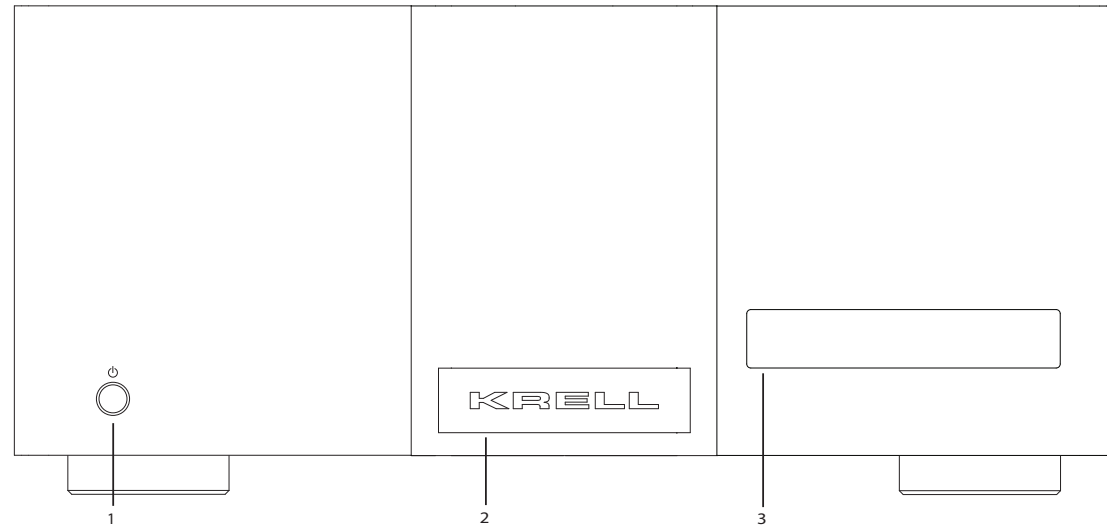
2. Carefully remove all items from the shipping box.
3. Place the amplifier in a safe location and remove the protective plastic wrapping.

Placement

Place the Theater 7 amplifier on a firm, level surface, away from excessive heat, humidity, or moisture. The amplifier requires at least one inch (2.54 cm) of clearance on each side and at least two inches (5 cm) of clearance above to provide adequate ventilation. Installations inside cabinetry may need extra ventilation. Do not place the amplifier on a deep pile carpet. There are ventilation slots on the bottom that must remain clear. Hot air vents from the bottom so the amplifier should not be placed on any surface that will be affected by air temperatures up to 140 degrees Fahrenheit (60 degrees Celsius).

Figure 1 The Theater 7 Front Panel

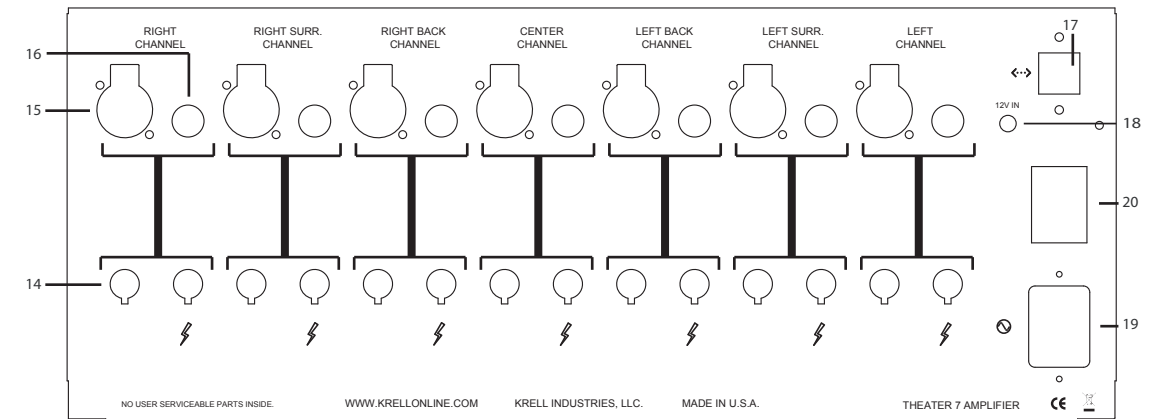
Front Panel



- 1 Power Button**
Use this button to switch the Theater 7 amplifier between stand-by and operational modes.
- 2 Power Indicator**
The stand-by indicator illuminates red when the Theater 7 amplifier is plugged into a standard AC wall receptacle and the rear panel power breaker switch is in the up position. This indicates that the amplifier is in the stand-by mode and ready to be switched to the operational mode. The indicator illuminates blue when the Theater 7 amplifier is in operational mode.
- 3 Front Panel Display**
The front panel display shows the model number, firmware version, serial number, and IP address. Fault conditions are also displayed on the front panel display.

Figure 3 The Theater 7 Back Panel

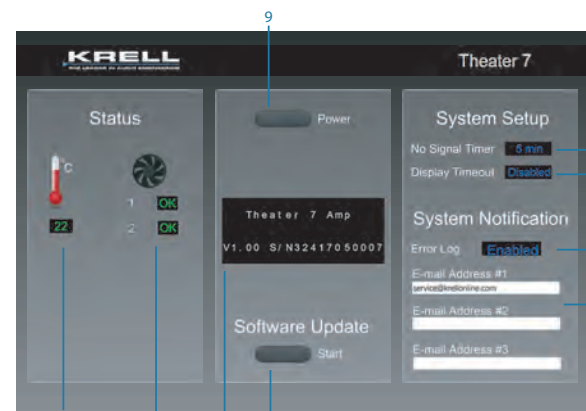
Back Panel



- 14 Loudspeaker Outputs**
The Theater 7 amplifier is equipped with standard binding posts for each amplifier channel.
- 15 Balanced Analog Inputs**
The Theater 7 amplifier is equipped with one balanced input per channel via XLR connector.
- 16 Single-Ended Analog Inputs**
The Theater 7 amplifier is equipped with one single-ended input per channel via RCA connector.
- 17 Ethernet Connection**
The RJ45 connector is used to connect the Theater 7 amplifier to a local area network (LAN). Once the amplifier is connected to the LAN, the amplifier's network control screen is viewable with a web browser on a device connected to the same network. Output current, fan speeds, and temperature are all monitored in real time. If a fault occurs, it is displayed on the front panel and on the web browser interface. Additionally, if the LAN has Internet access, e-mails will automatically be sent to as many as three e-mail addresses to notify Krell, the end user and/or the dealer of the condition.
- 18 12 VDC In (12 V trigger)**
The 12 V Trigger input allows you to place the Theater 7 amplifier into the stand-by or operational mode from other components.
- 19 IEC Connector**
The connector is for use with the provided IEC standard 20 amp power cord. This connector and power cord must remain unobstructed for easy removal in case of emergency.
- 20 AC Power Switch**
Use this switch to change the Theater 7 amplifier from off to the stand-by mode.

Network Control

Figure 2 Network Control Screen



After connecting the Theater 7 amplifier to a local area network (LAN) via the RJ 45 connector (17), enter the amplifier's IP address into the address bar of a web browser on a device connected to the same LAN. The following additional features are now available.

- 1 Temperature Monitoring**
The Theater 7 monitors the temperature of the heat sink and adjusts fan speed to maintain proper cooling. Temperatures shown in green, yellow, and red, indicate cool, warm, and hot operating temperatures.
- 2 Fan Operation Status**
Fan speed is monitored and is indicated by a green OK for proper operation and a red E for an error.
- 3 Display Window**
Indicates amplifier status and any fault conditions.
- 4 Software Update**
Press this button to initiate a software update
- 5 Error Log**
Set to Enabled to have fault conditions sent to the e-mail addresses listed in the e-mail address window (6).
- 6 E-mail Address window**
Up to 3 e-mail addresses can entered to receive fault condition e-mails.
- 7 Display Timeout**
Set the time for how long the front panel display remains illuminated. The Disabled option keeps the display illuminated indefinitely.
- 8 No Signal Timer**
Set the time for how long the amplifier remains in operational mode without receiving an input signal. The Disabled option keeps the amplifier in operational mode indefinitely.
- 9 Power Button**
Click on the Power button to turn the Theater 7 on or off.

Note:
The network must have Internet access for features 4 and 5 to function.