



Installation Procedure for XMC-1 HDMI 2.0b Video Upgrade board

**WARNING! Firmware upgrade MUST be performed
BEFORE installing new hardware.**

**Failure to upgrade firmware before installing new hardware will result in a
non-functional XMC-1.**

**NOTE! There are static sensitive parts in your XMC-1 and on
your new upgrade board.**

An anti-static wrist strap was included with your new board.

**Please place the wrist band on your wrist and connect the clip to a
ground source BEFORE opening your XMC-1 or unpacking
your new upgrade board.**

DO NOT unpack your new HDMI upgrade board until ready to install it.

XMC-1 HDMI 2.0b Video Upgrade board FIRMWARE UPDATE PROCEDURE

Update Procedure:

**Make sure to set the Standby Mode on your XMC-1 to LOWEST POWER before proceeding.
(This setting may be found under Menu | Setup | Advanced Setup | Standby)**

- Extract the firmware update file (one file) from the ZIP archive you downloaded.
- Copy the firmware update file onto a standard FAT32 formatted USB flash drive.
- Insert the USB drive into the USB port on the front or back of the XMC-1.
- Press the Menu button.
- Use the Up/Down buttons to select Setup; press the Right button to enter the Setup menu.
- Use the Up/Down buttons to select Advanced; press the Right button to enter the Advanced Setup menu.
- Use the Up/Down buttons to select Firmware Update; press the Right button to enter the confirmation screen.
- Use the Up button to confirm your choice; the confirmation box will change to "X".
- Use the Left button to confirm the update.

ONCE YOU PRESS THE LEFT BUTTON THE UPDATE WILL COMMENCE.

- During the update process the screen will display the names of the various firmware modules being updated; for some modules, you will see a progress bar while the update is completed. The entire update process will take approximately three to five minutes - or less.
- When the update process is complete, the XMC-1 will switch into Standby mode.

DO NOT POWER YOUR XMC-1 ON AFTER PERFORMING THIS FIRMWARE UPDATE

- Remove the USB drive containing the firmware update.
- Turn off the main power switch on the back of the XMC-1.

Proceed to hardware upgrade instructions.

XMC-1 HDMI 2.0b Video Upgrade board HARDWARE UPDATE PROCEDURE

#1. Disconnect the power cable from your XMC-1. Disconnect all HDMI input and output connections from your XMC-1. Remove 8 total top cover philips head screws. 3 on chassis right side, 3 on chassis left side, and 2 on top rear.



#2. Remove top cover by lifting up from rear.



NOTE: Several different sizes and types of screws are used in the XMC-1. When you remove the screws, be sure to keep track of which screws are removed from each location so you can replace the correct screws in their proper locations later.

BE SURE TO PUT ON ANTI-STATIC WRIST STRAP

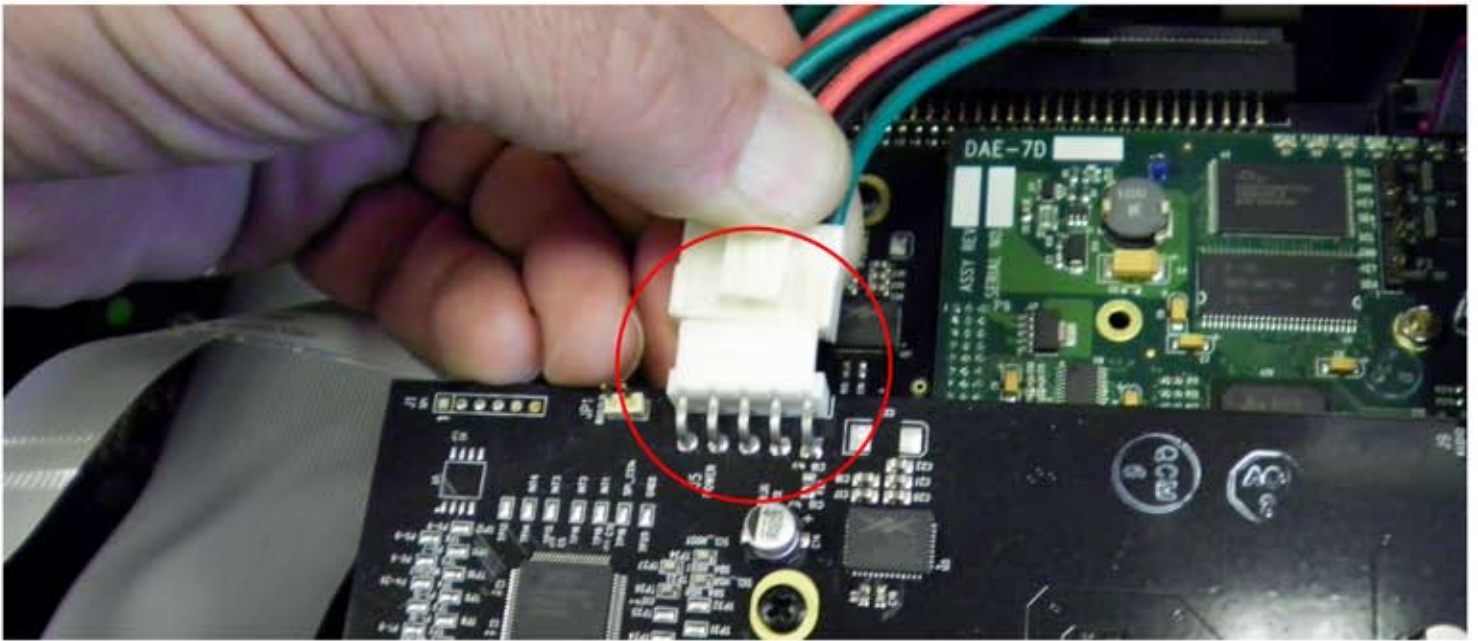
BEFORE PROCEEDING.

- Put bracelet from wrist strap on either wrist.
- Attach clip from wrist strap to metal bracket (as shown)
- Keep wrist strap on while handling circuit boards or working inside the XMC-1.

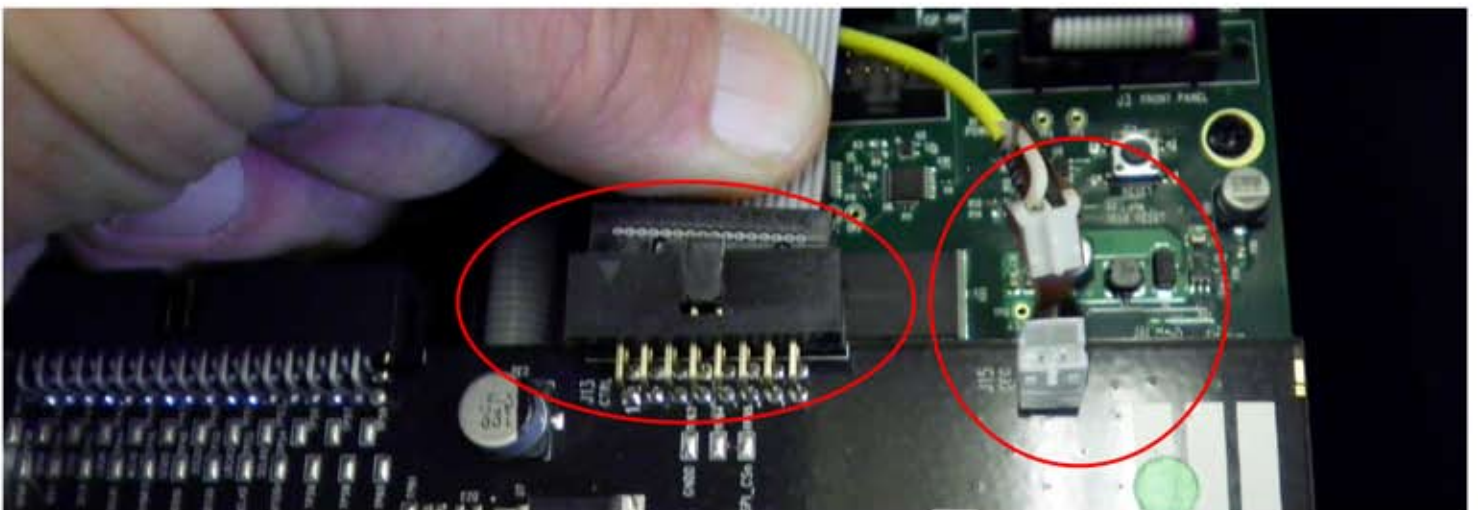
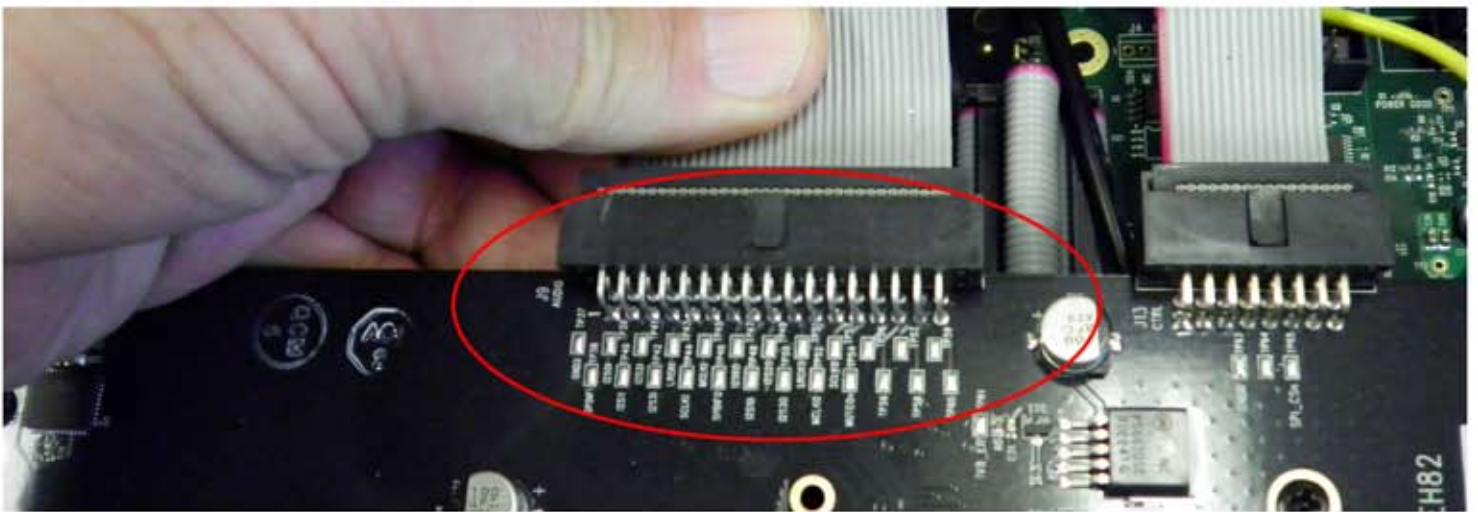


NOTE: The connectors inside your XMC-1 may be secured in place with a small dab of flexible adhesive to prevent their loosening during shipping. If you have trouble removing connectors, try gently wiggling them from side to side to loosen them. If necessary, use a small screwdriver or knife to carefully scrape away some of the adhesive. When unplugging a connector, always apply pressure to the connector itself if possible, and use extreme care if you pull on the cable to remove it.

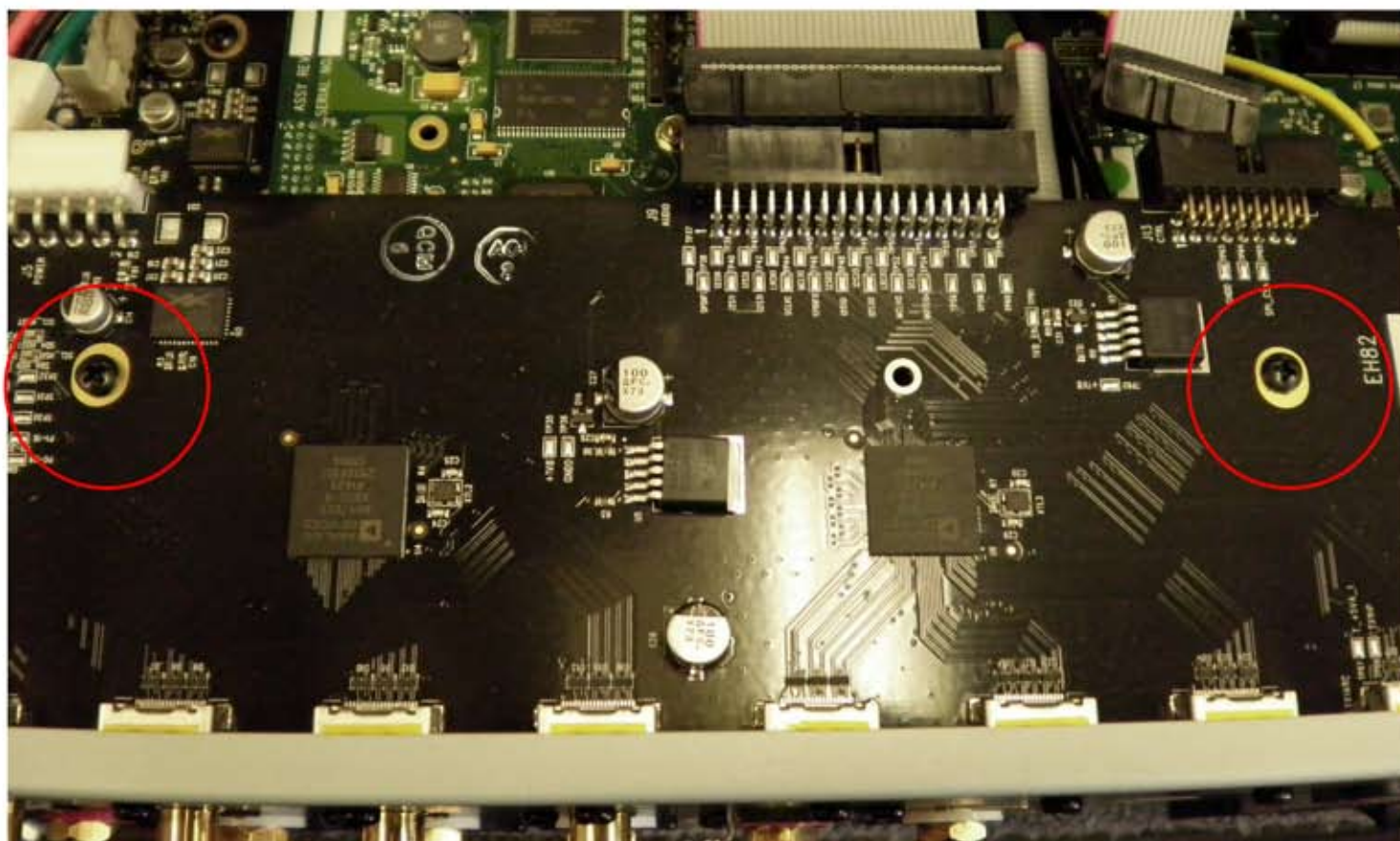
#3. Gently unplug connector J15 by pulling it sideways while pressing down on the small tab – as shown



- Gently unplug ribbon connectors J13 and J15 by pulling sideways – as shown.
- Gently unplug small connector J9 by pulling it vertically upwards.
- When removing J9, be careful to pull on the connector and not on the wires.



#4. Remove 2 HDMI PCB Screws



#5. Remove 10 HDMI screws



#6. Remove original HDMI Video board and set aside.

Carefully unpack and examine your new HDMI 2.0b Video Upgrade board and check for damage.



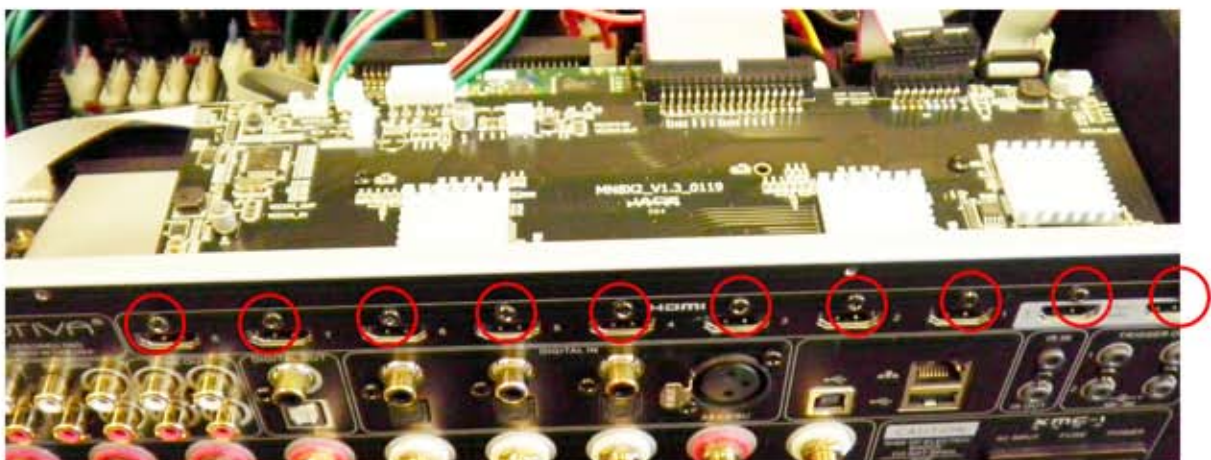
#7a: Slightly loosen the two brass standoffs which support the HDMI Video board from underneath. (Loosen them no more than one full turn; just enough to allow them to move slightly.)

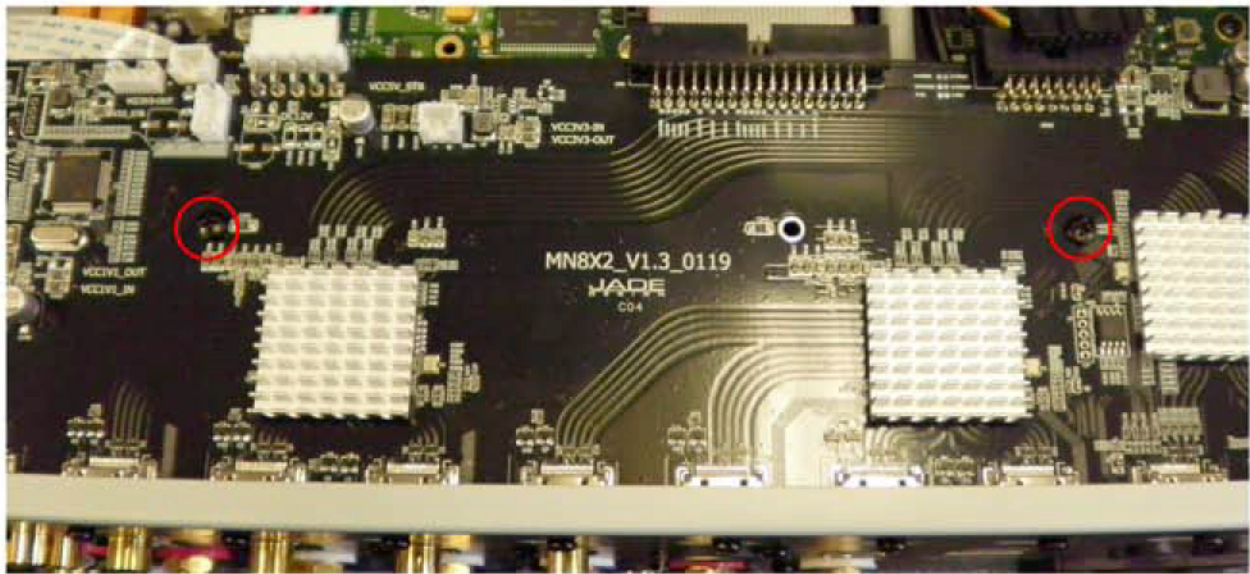
#7b: Carefully position the new HDMI Video Upgrade board in your XMC-1.

#7c: Loosely secure the new board with the ten rear panel screws you removed in Step #5. DO NOT TIGHTEN THESE SCREWS YET.

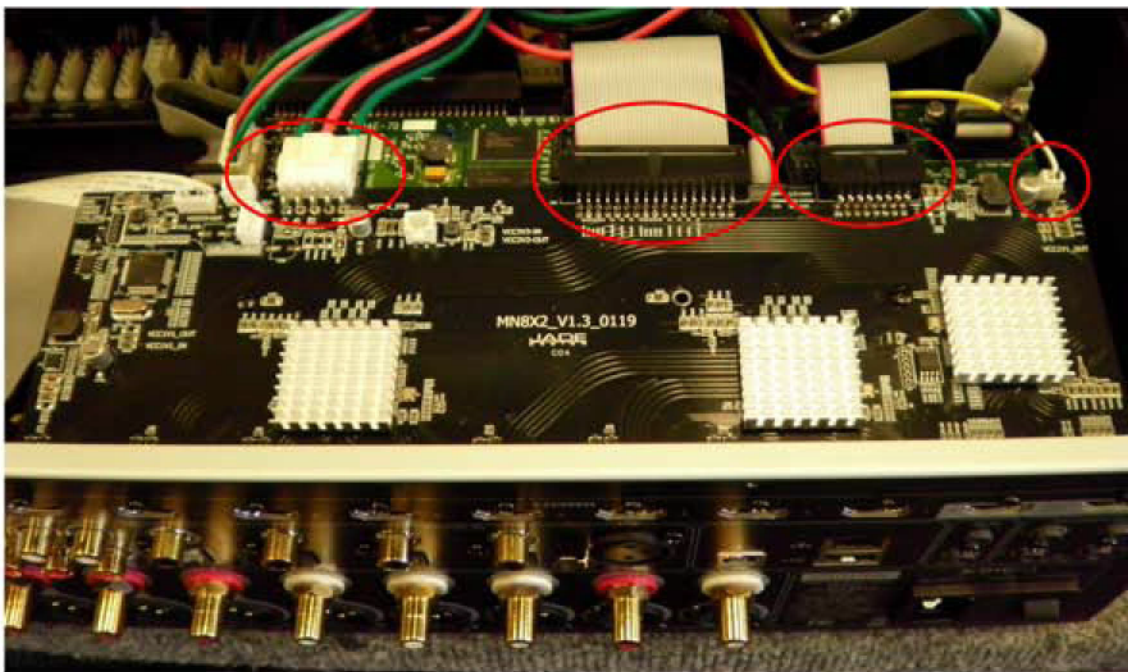
#7d: Loosely replace the two screws in the top of the board which you removed in Step #4.

#7e: Once you have loosely replaced all of the screws, then go back and tighten all the screws securing the board, starting with the two on top of the board. The brass standoffs under the board will tighten as you tighten the screws inserted into them. Be careful not to damage any components mounted on the circuit board near the screw holes.





#8. Reconnect 4 harnesses J5, J9, J13, and J15 connectors from STEP #3.



#9. Unclip wrist strap. Reinstall 8 top cover screws from STEP #1.

#10. Peel adhesive backing off new HDMI V3 sticker. Line up holes over the back screws. Push the sticker over the screws and seat it properly on the chassis.

#11. Reinsert power cable and reconnect HDMI devices.