

Focal-JMLab® - BP 374 - 108, rue de l'Avenir - 42353 La Talaudière cedex - France
Tel . +33 (0) 477 435 700 - Fax + 33 (0) 477 435 704 - ©Focal-JMLab 2015 - SCAB -150625/9

Focal®, Focal The Spirit of Sound®, Utopia®, Electra®, Sopra®, Chorus®, Easys®, Aria®, Dôme®, Bird®, Sib&Co, XS Book, XS 2.1, Spirit One S, Spirit Classic, CMS, SM6, SM9, Spirit Professional, DFS®, Elite, K2 Power, Utopia Be, Intégration, Plug&Play, Universal, Performance, Access, Expert, DSA 500 RT, "W", Gamma Structure, Focus Time, Power Flower, Be Tweeter, IAL2, IHL, NIC, TMD, Multiferrite, EM, MDS, Flax, Polyglass, OPC, Powerflow, Wall Boost Control, are trademarks or registered trademarks of Focal-JMLab®.



Due to constant technological advances, Focal-JMLab® reserves its right to modify specifications without notice.
Images may not conform exactly to specific product - Photos L'Atelier Sylvain Madelon.



EXP - GB

Classic Collection 2015





Classic Collection

The **Classic Collection** is right at the heart of Focal's expertise, that of the traditional loudspeaker. An historic tradition of the high-fidelity or Home Cinema system, each component of the "chain" (the amplifier, the sources, the cables and naturally, the loudspeakers) is passionately chosen with precious advice from specialists.

These are also technological loudspeakers, as each line of this collection explores solutions which are innovative, exclusive and protected by numerous patents in order to ensure we have the best loudspeaker possible in all categories.

Finally, these are loudspeakers made with passion, created by passionate people, entirely designed and manufactured at the production site in Saint-Etienne. From the Grande Utopia EM, considered as the absolute benchmark worldwide, to the small Chorus 705, all Focal loudspeakers are created and manufactured by the same

teams, with the same know-how. **Utopia III** is our reference loudspeaker range, an icon which exudes luxury and the values of the brand, where innovation is constant and compromises are unacceptable, the pinnacle of world class speaker design. Moreover, the finishing can be 100% personalised.

Sopra incorporates the latest Focal acoustic innovations articulated around a design that combines strength, compactness and modernity. Our desire is to bring High-End sound back in your living space

Electra 1000 Be 2 is the Premium line with the best technologies often taken from the Utopia III. A compact and complete high-end, once again with endless possibilities for personalisation.

The **Aria 900** symbolises a new technological era for high-fidelity loudspeakers. Equipped with Flax cone speaker drivers, this line

combines a conservative and modern design. The essence of the "Affordable High-End".

The 4th generation of **Chorus 700** is faithful to the core concepts of the range: affordability and remarkable sound potential. The style has been modified to correspond to modern trends, leaving behind the "V" design in favour of more flowing curves.

Crucial element of any Home Cinema system, the **subwoofer** provides sweep and depth to our multichannel audio visual experience. To do so, we offer a product range with all our historic expertise, covering a wide range of uses and design.

The Classic Collection, six different universes for discovering our philosophy "the Spirit of Sound".

the Spirit of Sound

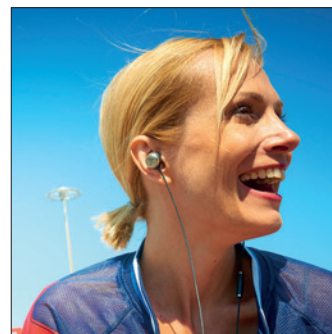
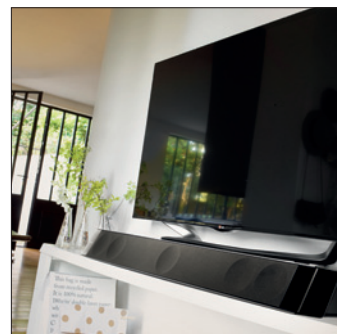
Since 35 years, Focal has designed, developed and manufactured drive-units and loudspeakers. Our renown is international: that of a market leader in the segment of quality acoustic loudspeakers. Over these years, several legendary models and series have appeared and led the way to greater success and prestige. At the zenith of this evolution, the Grande Utopia. This speaker alone created a worldwide shock that inscribed Focal into history books as the most innovative loudspeaker brand on the planet. Innovation,

design and industrialisation follow in a tradition where skilled handwork remains an essential element of our luxury offering, and justifies our activities in research and development, and most of all, the manufacturing of our loudspeakers at our production site. Dynamism and creativity are intrinsic Focal values.

We believe that to push limits is the only possible avenue to innovation and that all that belongs to the domain of the impossible simply represents a challenge.

Pure Beryllium inverted dome tweeter, exclusive Flax and "W" sandwich cones, Polyglass cone, OPC crossover, Focus Time cabinet, "IAL" tweeter and more recently, "TMD" suspension, "NIC" magnetic circuits and "IHL" tweeter, are all answers to these new challenges.

Innovation, tradition, performance and pleasure are our key values; they characterise "the Spirit of Sound".



> At home, in your car, in professional studios, in public places and in the street, the Focal world begins where there's a need for a quality sound.





> Grande Utopia EM Black Lacquer finish.

Utopia III



Myths develop over the years

The Grande Utopia story started in 1995 with a major innovation: the W composite sandwich cone. It went on in 2002 with the Grande Utopia Be that introduced the pure Beryllium inverted dome tweeter. Other important inventions distinguished those two reference loudspeakers, which are still existing in the 2008 Grande Utopia. But nothing that can be compared to the "W" sandwich or the Beryllium, showcase of Focal's know-how, Focal, designer and manufacturer of the best drivers in the world.

The 2008 technological break concerns once again the driver - at the heart of Focal's know -how - with the Electro-Magnet woofer technology. Such a decisive step that it gives its name to this third generation of Grande Utopia. It's a new milestone that is added to the long list of innovations coming from the previous generations of Grande Utopia: "W" cone, Focus Time, Multiferrite, Beryllium, Power Flower, OPC, Gamma Structure, all Utopia's patrimony

is taken up in its entirety, enriched with new technologies. To preserve this heritage, the 2008 Grande Utopia had to be immediately visually identifiable, keeping its imposing aspect of a reference loudspeaker, without being massive. To reach our first goal, we kept the Focus Time structure and the separate blocks for each driver, the true aesthetic signature of the Grande Utopia. To lighten the shape, the delimitation between the blocks is more important. Simplifying the object in the extreme and eliminating what could be aesthetically superfluous.

Handed over to Pineau & Le Porcher agency, with which Focal-JMLab has been collaborating since 2003, the Grande Utopia EM's design is all purity and clarity - obvious. That's a truly amazing feat for a loudspeaker that now reaches 78" (2m) high and weighs 573lbs (260kg)...



The Grande Utopias are not only loudspeakers that have had a great impact on their generation. It's also the most accomplished concept of "The Spirit of Sound", the ultimate reference. After the "W" cones and the pure Beryllium tweeter of the previous models that had marked a technological advance, the Grande Utopia EM adopts an Electro-Magnet woofer (EM) with a force that cannot be compared to classical technologies. Superlative performance, unique style: the Grande Utopia EM is not only a technological monument, it's above all an acoustic sculpture.

Real technological twin sister of the Grande Utopia EM, the Stella Utopia EM has absorbed the gist of the most outstanding innovations, in a 3-way version and with more convenient dimensions. The new 13" [33cm] built-in W woofer works with the same electro-magnet as in the Grande Utopia EM, which is as well efficient in the infrabass as in the midbass. A major innovation that makes you rediscover all the dynamics and definition in a critical frequency response that's totally brought to light by the Stella Utopia EM.

A three-and-a-half-way loudspeaker, Maestro Utopia is one of the most sophisticated loudspeakers produced by Focal. To get closer to the Grande Utopia EM model without resorting to an electro-magnet, it innovates in the bass with the MDS (Magnetic Damping System) to adapt to the listening room. With its 93dB efficiency, its punchy dynamics and its outstanding definition, its power capacity seems unlimited. Maestro is also suggested as a studio mastering midfield system.

The three-way floor standing loudspeaker Scala V2 has retained all the qualities of the previous version which has been unanimously acclaimed by the most discerning audiophiles world wide for over 5 years: a beautiful design, unbelievable musicality and easy to install. The Scala V2 now boasts a new bass unit providing improved power handling, giving more effective bass and enhanced control. This has also improved the midrange register whose focus has progressed immensely, resulting in a more precise and remarkable sound stage.

The latest model of the Utopia III range, Viva Utopia is a 3-way loudspeaker dedicated to the most sophisticated multichannel configurations. Vertical (Viva Utopia) or horizontal (Viva Center Utopia), either in Home Theatre or Stereo configuration, it's always efficient. Advantages: extreme clarity of the midrange, high efficiency and power handling and very low directivity on the horizontal axis for perfect control of phase and 3D image. Plus all the Utopia III technological skills...

Compact, distinguished and captivating, Diablo Utopia is the ultimate vision of the reference bookshelf loudspeaker, in the purest Focal's tradition. Largely inspired from the Grande Utopia EM, it sets new milestones in the bass thanks to its new patented 6 1/2" [16.5cm] Power Flower, with almost no saturation, and a driver integrated resonator. Fixed on a dedicated stand, Diablo Utopia enchants the midrange and the treble with its definition, demonizes the bass with a density and a power handling never reached so far.

> Optional Diablo Utopia Stand, 24" [60cm].
> Optional Viva Utopia Stand, 16" [40cm].

	Grande Utopia EM <i>Carrara White finish</i>	Stella Utopia EM <i>Black Lacquer finish</i>	Maestro Utopia <i>Black Lacquer finish</i>	Scala V2 Utopia <i>Imperial Red finish</i>
• Type	4-way floorstanding bass-reflex loudspeaker	3-way, floorstanding bass-reflex loudspeaker	3 1/2-way, floorstanding bass-reflex loudspeaker	3-way floorstanding bass-reflex loudspeaker
• Drivers	Electro-Magnetic 16" [40cm] "W" woofer Multiferfrite 11" [27cm] "W" midbass 2 Power Flower 6 1/2" [16.5cm] "W" midrange 1 1/16" [27mm] "IAL2" pure Beryllium inverted dome tweeter	Electro-Magnetic 13" [33cm] "W" woofer 2 Power Flower 6 1/2" [16.5cm] "W" midrange drivers 1 1/16" [27mm]"IAL2" pure Beryllium inverted dome tweeter	11" [27cm] "W" subwoofer with a Magnetic Damping System (MDS) 11" [27cm] "W" woofer 6 1/2" [16.5cm] "W" Power Flower Midrange 1 1/16" [27mm]"IAL2" pure Beryllium inverted dome tweeter	11" [27cm] "W" woofer Power Flower 6 1/2" [16.5cm] "W" midrange 1 1/16" [27mm]"IAL2" pure Beryllium inverted dome tweeter
• Frequency response [±3dB]	18Hz - 40kHz	22Hz - 40kHz	25Hz - 40kHz	27Hz - 40kHz
• Low frequency point [-6dB]	14Hz	18Hz	21Hz	24Hz
• Sensitivity [2.83V/1m]	94dB	94dB	93dB	92dB
• Nominal impedance	8 Ohms	8 Ohms	8 Ohms	8 Ohms
• Minimum impedance	3 Ohms	2.8 Ohms	3 Ohms	3.1 Ohms
• Crossover frequency	80Hz / 220Hz / 2 200Hz	220Hz / 2 200Hz	90Hz / 220Hz / 2 200Hz	250Hz / 2 200Hz
• Recommended amplifier power	50 - 1500W	50 - 1 000W	80 - 600W	40 - 500W
• Dimensions [HxWxD]	79 13/16 x 25 3/4 x 34 5/8" [2012 x 654 x 880mm]	61 1/3 x 21 3/4 x 32 11/16" [1558 x 553 x 830mm]	57 7/8 x 18 x 30 5/16" [1470x455x770mm]	49 1/8 x 15 1/2 x 26 3/8" [1247 x 393 x 670mm]
• Net weight	573.2 lbs [260kg]	363.76lbs [165kg]	256lbs [116kg]	187.4lbs [85kg]

Viva Utopia / Viva Center Utopia <i>Black Lacquer finish</i>	Diablo Utopia <i>Imperial Red finish</i>
3-way LCR bass-reflex loudspeaker	2-way compact bass-reflex loudspeaker
Two 8 "[21cm] "W" woofers Power Flower 6 1/2" [16.5cm] "W" midrange 1 1/16" [27mm] IAL2 pure Beryllium inverted dome tweeter	Power Flower "W" 6 1/2" [16.5cm] midbass 1 1/16" [27mm] IAL2 pure Beryllium inverted dome tweeter
39Hz - 40kHz	44Hz - 40kHz
34Hz	40Hz
92dB	89dB
8 Ohms	8 Ohms
3.2 Ohms	4 Ohms
270Hz / 2200Hz	2 200Hz
50 - 600W	25 - 200W
37 1/16 x 12 11/16 x 20 1/16" [942 x 322 x 510mm]	16 15/16 x 10 3/16 x 16 13/16" [431 x 258 x 427mm]
125lbs [57kg]	44lbs [20kg]



> Sopra N°2 "Dogato Walnut" finish.

Sopra



Reveal the invisible

At Focal, innovation doesn't stop at technology. We're obsessed with the comprehensive result: a harmonically rich, lush sound; a transparent and precise reproduction of the musical work. Still, we've never lost track of our core expertise, loudspeaker drivers, the very stepping stones along the path to great sound.

The original Grande Utopia was designed in 1995 as a prototype to apply and validate new speaker technologies. Twenty years later, Utopia is undeniably a worldwide reference, praised for its incredible musicality.

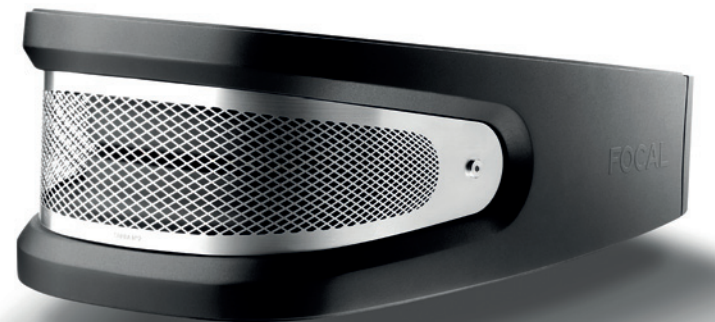
We continue to learn and to progress by systematically putting our research into development, to evaluate distinct contributions by listening to them in practice.

Every innovation – from cone materials ("W" Composite Sandwich Cone and Inverted-Dome Beryllium), to magnets (multi-ferrite magnet, EM woofer, and "IAL"-2 tweeter), to crossovers (OCP+ circuit), and even to cabinets (Gamma Structure) –

plays a role in our technological legacy. Fittingly, we may draw on this legacy whenever it is feasible to improve our technology and to set new benchmarks.

We most recently reaped its rewards with the Sopra project, a reasonably compact and elegant incarnation of many of the innovations that, until now, had only been realized in the uncompromising Utopia. As you shall discover in these pages, Sopra incorporates several major technological breakthroughs.

It's still possible to advance the state of the art of speaker driver technology with digital analysis capable of revealing the subtlest performance aspects, and enabling us to improve the transparency, precision, and harmonic richness of sound reproduction..."*The Spirit of Sound*"





Compact and powerful, Sopra N°1 is a concentration of technological innovation. It features Neutral Inductance Circuits "NIC", Tuned Mass Damping surrounds "TMD" for the midrange woofer, and Infinite Horn Loading "IHL" of the tweeter. It is a true demonstration of the contribution of the new technologies implemented on Sopra. Its special stand has been designed to ground interfering vibrations from the enclosure to the floor to avoid any colouration. Ideal for small rooms up to 270ft2 (25m²) and medium sized spaces up to 550ft2 (50m²).



Compact and powerful, Sopra N°1 is a concentration of technological innovation. It features Neutral Inductance Circuits "NIC", Tuned Mass Damping surrounds "TMD" for the midrange woofer, and Infinite Horn Loading "IHL" of the tweeter. It is a true demonstration of the contribution of the new technologies implemented on Sopra. Its special stand has been designed to ground interfering vibrations from the enclosure to the floor to avoid any colouration. Ideal for small rooms up to 270ft2 (25m²) and medium sized spaces up to 550ft2 (50m²).

Sopra N°2

Electric Orange finish

Sopra N°1

Carrara White finish

• Type	Three-way bass-reflex floor standing loudspeaker	Two-way bass-reflex bookshelf loudspeaker
• Speakers	Two 7" (18cm) "W" woofer 6 1/2" (16.5cm) "W" midrange with "TMD" suspension, with "NIC" motor 1 1/16" (27mm) "IHL" Beryllium inverted dome tweeter	6 1/2" (16.5cm) "W" bass midrange with "TMD" suspension, "NIC" motor 1 1/16" (27mm) "IHL" Beryllium inverted dome tweeter
• Frequency response (±3dB)	34Hz - 40kHz	45Hz - 40kHz
• Low frequency point -6dB	28Hz	41Hz
• Sensitivity [2.83V/1m]	91dB	89dB
• Nominal impedance	8 Ohms	8 Ohms
• Minimum impedance	3.1 Ohms	3.9 Ohms
• Crossover frequency	250Hz / 2 200Hz	2 200Hz
• Recommended amplifier power	40 - 300W	25 - 150W
• Dimensions (HxWxD)	46 27/32"x14 3/32"x21 17/64" [1 190x358x540mm]	16 47/64"x10 63/64"x15 19/32" [425x279x396mm]
• Weight (unit)	121.25lbs - (55kg)	41.89lbs - (19kg) [stand: 40.78lbs (18.5kg)]



> Sopra N°1 & Sopra N°2 "Carrara White" finish.



> Electra 1028 Be, Black Lacquer finish.



Electra 1000 Be 2

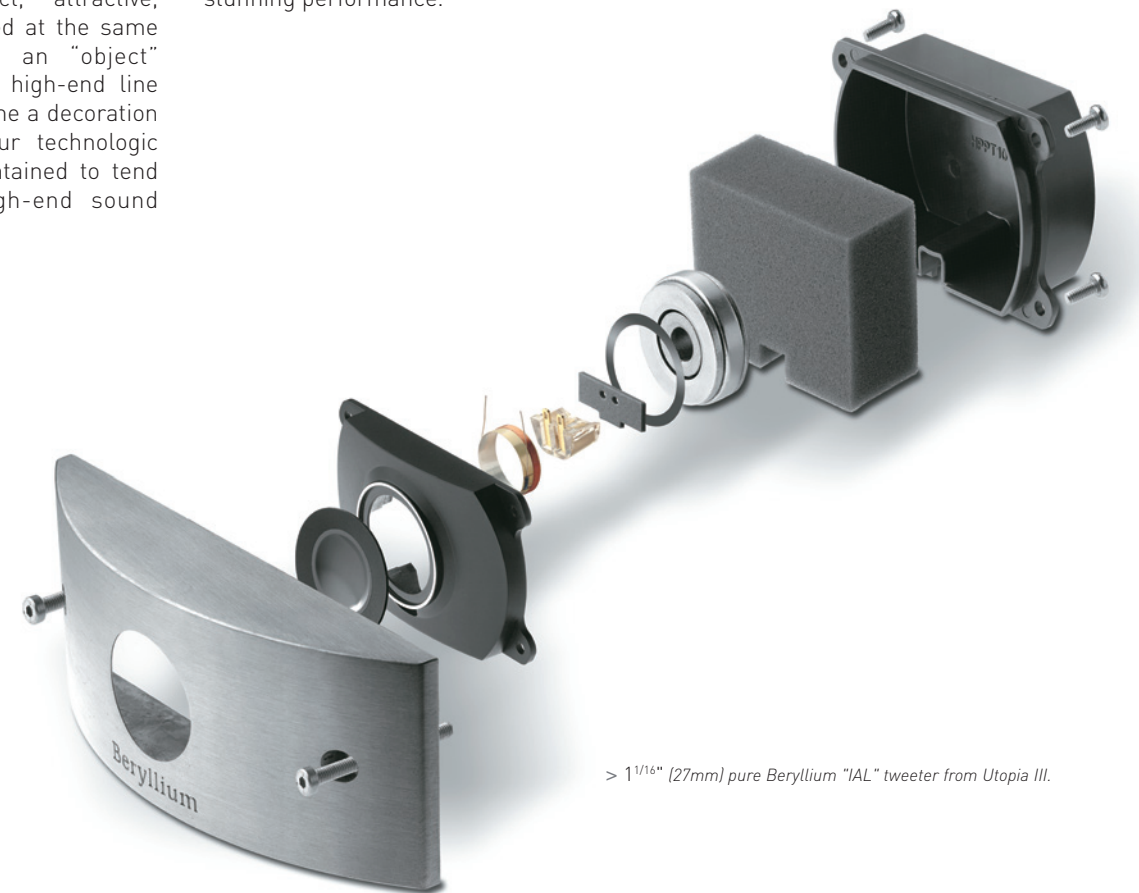
That which stirs emotion...

The Electra 1000 line was founded on an obvious fact: to make the heritage, technologies and performance once reserved for Utopia more accessible... on an economic level of course but not only. We wanted to create a high-end line of loudspeakers in harmony with the integration requirements in the nowadays interiors, compact, attractive, sleek and balanced at the same time. We added an "object" dimension to our high-end line that entirely became a decoration element, while our technologic patrimony is maintained to tend towards very high-end sound definition...

We entrusted our ideas and our innovations to a designer group in Paris Pineau & Le Porcher who sketched out the first contours in order to unite style and x
In the end, this is a complete line made for high-fidelity and Home-Cinema, easy to install and to use, a true emotion-provider with its sophisticated aesthetics and its stunning performance.



> The Electra 1000 Be 2 line is available in Carrara White and Black Lacquer standard finishes. Basalt, Champagne and Mahogany finishes are available on demand. (see conditions with your retailer).



> 1 1/16" (27mm) pure Beryllium "IAL" tweeter from Utopia III.



The Electra 1008 Be embodies Focal know how in terms of high-end compact loudspeaker. It provides a spacious and natural sound image, improved definition and a more precise bass. The high power handling enables it to work in rooms of 40m² and more.



The Electra 1028 Be is the flagship of the range. Thanks to a dual port Powerflow system, the bass performances have been greatly improved. The dynamic leaps forward to be in harmony with the generosity and definition of the midrange-treble register that has always been a reference.



As the whole Electra Be 2 line, the 1038 Be benefits from new components and settings. The awesome strength of the three 7" (18cm) woofers, endless power, is now added to the new qualities gained in terms of sound image and definition. A true weapon of mass seduction.



The Electra CC 1008 Be follows the same evolutions as the loudspeakers so that the tones are in perfect harmony. Low horizontal directivity, high power-handling, definition and precision are part of the common points of Electra Be 2.



The SR 1000 Be benefits from the exclusive "bi/twin" structure with dual input permits to use it as well as in a 5.1 system (in bipolar mode) as in a 7.1 system (in dual mono mode). The advantage? Not multiplying the number of surround loudspeakers in your Home Cinema room.



> 24" (60cm) High Gloss S 1000 stand, Black Lacquer finish.



> Electra IC 1002.



> Electra IW 1002 Be.



> Electra IW 1003 Be.

	Electra 1008 Be Carrara White finish	Electra 1028 Be Black Lacquer finish	Electra 1038 Be Black Lacquer finish	Electra CC 1008 Be Carrara White finish
• Type	2-way bass-reflex bookshelf speaker.	3-way bass-reflex floor standing speaker, Powerflow.	3-way bass-reflex floor standing speaker.	3-way bass-reflex center speaker.
• Drivers	6 1/2" (16.5cm) "W" midbass. 1 1/16" (27mm) pure Beryllium "IAL" inverted dome tweeter.	Two 6 1/2" (16.5cm) "W" woofers. 6 1/2" (16.5cm) "W" midrange. 1 1/16" (27mm) pure Beryllium "IAL" inverted dome tweeter.	Three 7" (18cm) "W" woofers. 6 1/2" (16.5cm) "W" midrange. 1 1/16" (27mm) pure Beryllium "IAL" inverted dome tweeter.	Two 6 1/2" (16.5cm) "W" woofers. 3" (8cm) "W" midrange. 1 1/16" (27mm) pure Beryllium "IAL" inverted dome tweeter.
• Frequency response (±3dB)	46Hz - 40kHz	34Hz - 40kHz	33Hz - 40kHz	55Hz - 40kHz
• Low frequency point (-6dB)	41Hz	28Hz	26Hz	50Hz
• Sensitivity (2.83V/1m)	89dB	91.5dB	93dB	91dB
• Nominal impedance	8 Ohms	8 Ohms	8 Ohms	8 Ohms
• Minimum impedance	3.9 Ohms	3.5 Ohms	3.3 Ohms	4.1 Ohms
• Crossover frequency	2 200Hz	350Hz / 2 200Hz	230Hz / 2 200Hz	500Hz / 2 200Hz
• Recommended amplifier power	25 - 150W	40 - 300W	40 - 400W	40 - 200W
• Dimensions (HxWxD)	15 3/16x10 3/8x13 3/4" (385x264x350mm)	43 11/16x10 3/8x13 3/4" (1 110x264x350mm)	49 3/16x11 15/16x15 3/4" (1 250x303x400mm)	9 1/4x24x13 3/4" (235x609x350mm)
• Net weight	33lbs (15kg)	72.6lbs (33kg)	112.2lbs (51kg)	41.8lbs (19kg)

	Electra SR 1000 Be Black Lacquer finish
• Type	2-way sealed bipole/twin mono effects speaker
• Drivers	Two 6 1/2" (16.5cm) "W" midbass. Two 1 1/16" (27mm) pure Beryllium inverted dome tweeters.
• Frequency response (±3dB)	72Hz - 40kHz
• Low frequency point (-6dB)	59Hz
• Sensitivity (2.83V/1m)	91dB
• Nominal impedance	4 Ohms/8 Ohms
• Minimum impedance	3 Ohms/6 Ohms (bi/twin)
• Crossover frequency	2 400Hz
• Recommended amplifier power	40 - 200W
• Dimensions (HxWxD)	15 3/8x17x7 1/2" (390x430x190mm)
• Net weight	27.7lbs (12.6kg)



> Aria 926, Black High Gloss finish.

> New Flax sandwich driver.



Aria 900



Affordable High-End

Twenty years after the launch of the "W" sandwich cone, Focal is unveiling its new major innovation: speaker drivers with the same sandwich structure, but composed of a natural flax-fibre cone. This innovation is the result of more than 5 years of research and a unique drive to work on the actual source of the emission of sound. This constant quest for acoustic excellence gave birth to Aria 900, a range which prefigures the radical technological changes and which launches a design combining elegant classicism and modernity.

Aria 900 marks a new milestone for Focal and a new chapter in high-fidelity technology. Designed and made in France, the range features brand-new speaker dri-

vers with Flax sandwich cones, new TNF Aluminium/Magnesium inverted dome tweeters with Poron suspension, injected zamak baskets, carefully designed cabinets and crossovers: nothing has been spared when it comes to maximising listening pleasure for well-informed music lovers.

The style of Aria 900 marks a step forward for the current Classic Collection: the strong identity of the Chorus 800 V range has been replaced with a purer, simpler and more timeless style combining beautiful mineral and organic materials. The loudspeaker cabinets of Aria 900 range are available in Noyer and Black High Gloss finishes. All cabinets feature a glass surface and a leather-finished front panel.

This design exudes style and quality, helping it to blend in perfectly with traditional or more contemporary interiors.

The vast range of Aria 900 products is ideal for stereo and Home Cinema audio systems. The two 8^{1/4}" (21cm) woofers of the 948 model mark a return to true expressive and dynamic high-fidelity loudspeakers.

Despite its small size, the Aria 905 bookshelf loudspeaker is capable of reproducing sound worthy of a much bigger loudspeaker whilst providing very natural sound without any artificiality. The loudspeaker has detailed midrange as well as articulated and controlled bass thanks to the oversized magnet of the midrange/bass speaker driver. It's a true ultra-compact hi-fi loudspeaker. It is recommended for rooms measuring from 107ft2 (10m2) and for a listening distance of 2m.

Aria 906 bookshelf loudspeaker is faithful to the DNA of the Aria range: refined high-end acoustics combined with excellent perceived value thanks to the use of noble materials. This 2-way loudspeaker allows users to enjoy all the qualities of the Flax cone: neutrality, presence and finesse. Aria 906 is recommended for rooms measuring from 160ft2 (15m²) and from a listening distance of 8ft (2.5m).

Aria 926 embodies the home 3-way floor standing loudspeaker. This musical and expressive loudspeaker is easy to install. All kinds of music lovers will be thrilled with its acoustic qualities. Aria 926 is by definition an affordable audiophile loudspeaker. It is ideal for rooms measuring from 215ft2 (20m²) and from a recommended listening distance of 10ft (3m).

Aria 936 is a 3-way loudspeaker featuring an elegant design and a small footprint. Very linear and with impressive dynamics, thanks to its 3 woofers, it is naturally intended for listening in stereo for monitoring-type activities. This loudspeaker is also ideal for setting up a spectacular Home Cinema system. Appropriate for rooms measuring from 270ft2 (25m²) and from a listening distance of 10-12ft (3-3.5m).

Aria 948 symbolises the return of the "true" acoustic loudspeaker. A new type of 3-way loudspeaker with two 8¼" (21cm) speaker drivers effortlessly providing intense and controlled bass. The intention was a return to the very essence of acoustics for those who are passionate about music. This is the ultimate loudspeaker of the range for rooms measuring from 320ft2 (30m²) and from a recommended listening distance of 12ft (3.5m).

The Aria CC900 2-way centre speaker can be easily combined with the front speakers of the range. The CC900 was developed with particular attention to timber matching in order to obtain sonic coherence and homogeneity for all kinds of configurations. Recommended for rooms measuring from 215ft2 (20m²) and for a listening distance of 10ft (3m).

Aria SR900 is a 2-way bipolar surround loudspeaker with the same acoustic characteristics as the other loudspeakers in the Aria range. Composed of two 5" (13cm) woofers with Flax sandwich cones, it provides very high-definition and natural sound. For the treble register, there are two aluminium/magnesium inverted dome tweeters with Poron suspension and a waveguide for a better control of directivity.

	Aria 905 <i>Noyer finish</i>	Aria 906 <i>Black High Gloss finish</i>	Aria 926 <i>Noyer finish</i>	Aria 936 <i>Black High Gloss finish</i>
• Type	Two-way bass-reflex bookshelf loudspeaker	Two-way bass-reflex bookshelf loudspeaker	Three-way bass-reflex floor standing loudspeaker	Three-way bass-reflex floor standing loudspeaker
• Drivers	5" (13cm) Flax bass midrange 1" (25mm) Al/Mg TNF inverted dome tweeter	6½" (16.5cm) Flax bass midrange 1" (25mm) Al/Mg TNF inverted dome tweeter	Two 6½" (16.5cm) Flax bass 6½" (16.5cm) Flax bass midrange 1" (25mm) Al/Mg TNF inverted dome tweeter	Three 6½" (16.5cm) Flax bass 6½" (16.5cm) Flax bass midrange 1" (25mm) Al/Mg TNF inverted dome tweeter
• Frequency response (±3dB)	60Hz - 28kHz	55Hz - 28kHz	45Hz - 28kHz	39Hz - 28kHz
• Low frequency point - 6 dB	52Hz	47Hz	37Hz	32Hz
• Sensibility [2.83V/1m]	89dB	89.5dB	91.5dB	92dB
• Nominal impedance	8 Ohms	8 Ohms	8 Ohms	8 Ohms
• Impédance minimum	4 Ohms	4.6 Ohms	2.9 Ohms	2.8 Ohms
• Recommended amplifier power	25 - 100W	25 - 120W	40 - 250W	50 - 300W
• Crossover frequency	2 500Hz	2800Hz	290Hz / 2400Hz	260Hz / 3100Hz
• Dimensions (HxWxD)	13 ^{5/32} x 8 ^{11/32} x 9 ^{41/64} " [334x212x245mm]	15 ^{3/8} x 8 ^{7/8} x 11" [390x225x280mm]	40 ^{3/4} x 11 ^{9/16} x 14 ^{5/8} " [1035x294x371mm]	45 ^{1/4} x 11 ^{9/16} x 14 ^{5/8} " [1150x294x371mm]
• Net Weight (unit)	13lbs (5.8 kg)	19lbs (8.5kg)	55lbs (25kg)	64lbs (29kg)

	Aria 948 <i>Noyer finish</i>	Aria CC900 <i>Noyer finish</i>	Aria SR 900 <i>Black Satin finish</i>
• Type	Three-way bass-reflex floor standing loudspeaker	Two-way bass-reflex floor standing <i>centre speaker</i>	Two-way sealed bipolar surround loudspeaker
• Drivers	Two 8¼" (21cm) Flax bass 6½" (16.5cm) Flax bass midrange 1" (25mm) Al/Mg TNF inverted dome tweeter	Two 6½" (16.5cm) Flax bass midrange 1" (25mm) Al/Mg TNF inverted dome tweeter	Two 5" (13cm) Flax bass midrange Two 1" (25mm) Al/Mg TNF inverted dome tweeter
• Frequency response (±3dB)	37Hz - 28kHz	57Hz - 28kHz	85Hz - 28kHz
• Low frequency point - 6 dB	31Hz	50Hz	67Hz
• Sensibility [2.83V/1m]	92.5dB	91dB	90dB
• Nominal impedance	8 Ohms	8 Ohms	8 Ohms
• Impédance minimum	2.5 Ohms	4.3 Ohms	3.6 Ohms
• Recommended amplifier power	50 - 350W	40 - 200W	25 - 120W
• Crossover frequency	280Hz / 2 600Hz	2800Hz	2200Hz
• Dimensions (HxWxD)	45¼ x 14 ^{5/8} x 16 ^{9/16} " [1150x371x420mm]	7 ^{7/8} x 20 ^{2/2+3/3} x 9 ^{5/8} " [200x533x245 mm]	11 ^{39/64} x 15 ^{3/4} x 6 ^{11/16} " [295x400x170mm]
• Net Weight (unit)	77lbs (35kg)	23lbs (10.5kg)	12lbs (5.6kg)



> 24" [60cm] optional ARIA S900 stand.



> Chorus 726 Walnut finish.

Chorus 700

Affordable Focal sound...

Reinvention without repetition, continuous progress and opening up to new horizons, that is our leitmotiv! Focal has set itself a new challenge with the Chorus range: making Focal's quality, sound and technologies available to the masses. Thanks to our technical know-how and to the industrial expertise which we have acquired over the last 30 years, we are able to offer to music lovers a fourth generation of Chorus 700 loudspeakers which stand up to the reputation of this range which has become a benchmark in its category.

Today, recognised and renowned worldwide, the Chorus line is complete and fulfilled. It represents

Focal's control of the whole design process as well as the manufacturing quality of their products. It takes advantage of the considerable technological advances developed for the world-renown benchmark product, the Utopia III: inverted dome tweeter, OPC crossovers...

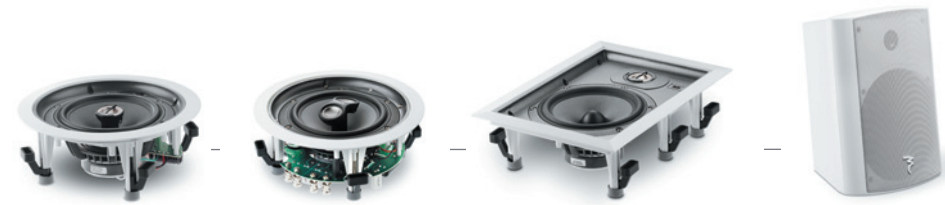
Most of all, it confirms that more than ever, in order to manufacture affordable products, investments are required in a high-performance production tool which is based on essential human intervention as well as rational industrialisation.

Whilst keeping the DNA of previous models in the Chorus range, the new generation of Chorus 700

loudspeakers offers a design and quality which stands up to the expectations of today's music lovers: remarkable audio performance combined with increased perceived value and elegance.



> TNV2 tweeter.



> In-Ceiling IC 706 V and IC 706 VST (stereo) loudspeakers.
In-Wall IW 706 V loudspeaker and outdoor OD 706 V loudspeaker.



The Chorus 705 is the perfect loudspeaker for small rooms of approximately 160ft² (15m²). Producing responsive and dynamic bass as well as rich and clear midrange/treble, this speaker can be combined with a subwoofer for an extremely efficient audio system. Thanks to the built-in wall-mount, the Chorus 705 is ideal for surround sound with multi-channel installations.



The Chorus 706 is the archetypal benchmark bookshelf loudspeaker: true to Focal tradition. Compact and very well proportioned, it blends in perfectly with its surroundings. The outstanding balance, precision and definition provide you with the perfect loudspeaker for rooms of approximately 215ft² (20m²) without any sound limits.



This loudspeaker is the cadet of the floorstanders in the Chorus 700 line and its slender design means it takes up a minimum amount of floor space. Despite its small size, the Chorus 714 two-and-a-half-way loudspeaker takes full advantage of its two 5" (13cm) speaker drivers, ideal for rooms from 160-215ft² (15-25m²).



Chorus 716 is a 2.5-way loudspeaker with a high-end configuration thanks to its two 6.5" (16.5cm) speaker drivers working in tandem (only the top driver transmits the midrange). This configuration doubles the effect of the bass, perfect for rooms measuring up to 320ft² (30m²).



The Chorus 726 embodies the affordable traditional high-end loudspeaker: the restyled cabinet, combined with the new design of the cloth frames give these speakers a modern and slender look. Very technologically advanced, the 3-way design combines the exceptional definition of the midrange and the power of the two 6.5" (16.5cm) woofers, providing a great, ample and generous sound for spaces up to 430ft² (40m²).



The Chorus CC 700 is a center speaker which blends in perfectly with the entire Chorus line thanks to the optimization of the phase, resulting in optimal directivity and excellent acoustic coherence which is reinforced thanks to the high quality of its dynamics, linearity and timbre.



The SR 700 is a compact and discreet loudspeaker which can be easily integrated into your interior thanks to the built-in Polyfix wall mount. Featuring an optimized phase and the same speaker drivers as the Chorus line, the SR 700 is ideal for surround sound in large rooms and for accompanying various Chorus multi-channel installations.

	Chorus 705 <i>Walnut finish</i>	Chorus 706 <i>Black Style finish</i>	Chorus 714 <i>Walnut finish</i>	Chorus 716 <i>Black Style finish</i>
• Type	2 - way bass reflex bookshelf loudspeaker	2-way bass reflex bookshelf loudspeaker	2 1/2 - way bass reflex floorstanding loudspeaker	2 1/2 - way bass reflex floorstanding loudspeaker
• Drivers	5" (13cm) Polyglass midbass 1" (25mm) TNV2 Al/Mg inverted dome tweeter	6 1/2" (16.5cm) Polyglass midbass 1" (25mm) TNV2 Al/Mg inverted dome tweeter	5" (13cm) Polyglass woofer 5" (13cm) Polyglass midbass 1" (25mm) TNV2 Al/Mg inverted dome tweeter	6 1/2" (16.5cm) Polyglass woofer 6 1/2" (16.5cm) Polyglass midbass 1" (25mm) TNV2 Al/Mg inverted dome tweeter
• Frequency response (±3 dB)	65Hz - 28kHz	55Hz - 28kHz	52Hz - 28kHz	50Hz - 28kHz
• Low frequency point - 6dB	57Hz	47Hz	43Hz	41Hz
• Sensivity (2.83V / 1m))	89dB	90dB	91dB	91.5dB
• Nom. impedance	8 Ohms	8 Ohms	8 Ohms	8 Ohms
• Minimum impedance	3 Ohms	3.6 Ohms	4.2 Ohms	4.3 Ohms
• Crossover frequency	3 000Hz	3 000Hz	300Hz / 3 000Hz	300Hz / 3 000Hz
• Recommended amplifier power	25 - 100W	25 - 120W	25 - 150W	40 - 200W
• Dimensions (HxLxP)	12 ^{3/8} x 7 ^{1/2} x 8 ^{15/16} "" [315x190x227mm]	15 ^{3/8} x 8 ^{2/3} x 10 ^{3/8} "" [390x220x263mm]	35 ^{7/16} x 7 ^{7/8} x 10 ^{9/16} "" [900x200x268mm]	37 ^{3/8} x 8 ^{11/16} x 12 ^{1/8} "" [950x221x308mm]
• Net weight	12.5lbs (5.7kg)	18lbs (8.2kg)	35.6lbs (16kg)	45.1lbs (20.5kg)

	Chorus 726 <i>Black Style finish</i>	Chorus CC 700 <i>Walnut finish</i>	Chorus SR 700 <i>Black Satin finish</i>
• Type	3-way bass reflex floorstanding loudspeaker	2-way shielded center sealed loudspeaker	2-way sealed effect loudspeaker
• Drivers	Two 6 1/2" (16.5cm) Polyglass woofer 6 1/2" (16.5cm) Polyglass midrange 1" (25mm) TNV2 Al/Mg inverted dome tweeter	Two 6 1/2" (16.5cm) Polyglass midbass 1" (25mm) TNV2 Al/Mg inverted dome tweeter	6 1/2" (16.5cm) Polyglass midbass 1" (25mm) TNV2 Al/Mg inverted dome tweeter
• Frequency response (±3 dB)	49Hz - 28kHz	61Hz - 28kHz	75Hz - 28kHz
• Low frequency point - 6dB	39Hz	52Hz	65Hz
• Sensivity (2.83V / 1m))	91.5dB	91dB	90dB
• Nom. impedance	8 Ohms	8 Ohms	8 Ohms
• Minimum impedance	2.9 Ohms	5.2 Ohms	3.7 Ohms
• Crossover frequency	300Hz / 3 000Hz	3 000Hz	3 000Hz
• Recommended amplifier power	40 - 250W	25 - 200W	25 - 100W
• Dimensions (HxLxP)	38 ^{2/2} x 8 ^{3/4} x 13 ^{1/2} "" [990x222x343mm]	7 ^{5/16} x 19 ^{1/3} x 7 ^{11/6} "" [185x491x195mm]	11 ^{5/8} x 15 ^{2/3} x 5 ^{7/8} "" [295x398x149mm]
• Net weight	51.7lbs (23.5kg)	16.5lbs (7.5kg)	10.3lbs (4.7kg)



> 24" (60cm) Chorus S 700 stand,
Black Satin finish.



Subwoofers

A whole, unique family!

Home Cinema has always been a strongly anchored tradition in our philosophy. Our leitmotiv is to procure emotions and sensations for a true sound immersion in 3 dimensions. The subwoofer is the major element of the system thanks to its dynamism and intensity.

Our different subwoofers from Sub Utopia EM to Sub 300P enable several configurations: from the ultimate installations worthy of

a movie theatre to superlative performance and compact and discreet systems but still with a frightening effectiveness.

According to the size of your installation, you can now choose the most appropriate subwoofer and the one that perfectly meets your expectations in terms of performance and use.



The Sub Utopia EM is the last building block of the Utopia 3 range and the logical follow-up to the ultimate multi-channel reference speaker, Viva Utopia. With this subwoofer, Focal focused all its know-how on an entirely passive design, based around a 13-inch Electromagnet bass driver, that appeared with the Grande Utopia EM. An ideal complement to the Viva Utopia, this subwoofer can be used with any model of the range, including the Grande Utopia EM. Its secret? A clever stackable design (up to 3 subwoofers tall) that can answer even the most demanding power needs. The unequalled punch of EM technology, with the refinement and finesse of Utopia 3.



24 bits digital processor, 600W BASH® amplifier, 13" (33cm) "W" woofer, the Electra SW 1000 Be offers high-level performance with a 18Hz cut-off and a 119dB sound power. The SW 1000 Be now benefits from a remote control lock when infrared conflicts appear with other boxes.



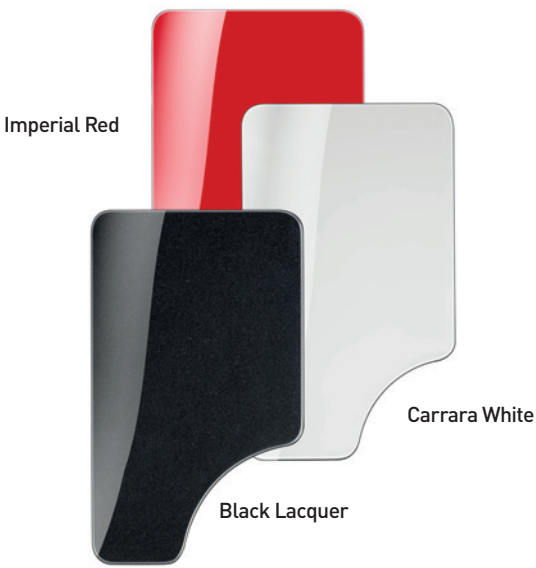
Powerful, reliable and compact, these are the characteristics of the Sub 1000 F. With its 12" (30cm) Flax woofer and its powerful 1000W BASH amplifier, Sub 1000 F will easily complete your Home Cinema system. The woofer is equipped with a dual motor for more linearity and to ensure an optimum magnetic power of the voice coil. In a close enclosure, this subwoofer is free from parasitic noise.



Sub 300 P is a subwoofer dedicated to thrill-seekers. He uses an 11" (27cm) Polyglass woofer powered by a powerful 300W RMS amplifier. Its Black Structured finish enables it to fit in any environment. Sub 300 P is a decisive asset to increase the bass response in the various multichannel systems.

	Sub Utopia EM Black Lacquer finish	Electra SW 1000 Be Carrara White finish	SUB 1000 F Black Finish	SUB 300 P Black Finish
• Type	Stackable passive subwoofer	Active bass-reflex subwoofer	Active bass-reflex subwoofer	Active bass-reflex subwoofer
• Drivers	A reference passive subwoofer Electro-Magnetic 13" (33cm) "W" bass driver Stackable (up to 3 subwoofers tall) Almost 130dB SPL at 1m (in a corner)	13" (33cm) "W" woofer.	12" (30cm) Flax woofer	11" (27cm) Polyglass woofer
• Frequency response (±3dB)	22Hz - 500Hz	20Hz - 150Hz	24Hz - 200Hz	36Hz - 160Hz
• Low frequency point (-6dB)	19Hz	18Hz	22Hz	29Hz
• Sensitivity (2.83V/1m)	93dB	Subwoofer features		
• Nominal impedance	8 Ohms			
• Minimum impedance	5.5 Ohms			
• Recommended amplifier power	500 - 1000W-			
• Crossover frequency	-	600W (750W max.) BASH® amplifier	Amplificateur BASH® 1000 W (550 W RMS)	Amplificateur BASH® 300 W RMS (600 W max.)
• Dimensions (HxWxD)	24 ^{15/16} x 19 x 24 ^{1/2} " (634 x 483 x 622mm)	21 ^{1/16} x19 ^{11/16} x17" (535x500x432mm)	15 ^{3/16} x17 ^{23/32} x 16 ^{17/32} " (400x450x420mm)	16 ^{9/16} x12 ^{13/16} x14 ^{13/16} " (420x325x380mm)
• Net weight	158.5lbs (72kg)	92.4lbs (42kg)	47.4lbs (21.5kg)	33.6lbs (15.5kg)

Utopia III finishes



Not all the standard finishes of Utopia III line are available in all countries and/or commercial distribution networks. **Loudspeakers can be personalized on request (see conditions with your retailer).**

Sopra finishes



Not all the standard finishes of Sopra line are available in all countries and/or commercial distribution networks.

Aria 900 finishes



Black High Gloss: special finish at price increased.

Chorus 700 finishes



Not all the standard finishes of Chorus 700 line are available in all countries and/or commercial distribution networks.

Electra 1000 Be 2 finishes



Not all the standard finishes of Electra 1000 Be 2 line are available in all countries and/or commercial distribution networks.



> Sopra N°2 "Electric Orange" finish.