

PRODUCT OVERVIEW
2019

Home
IS WHERE MY
Canton
IS

CANTON[®]
German loudspeaker tradition

www.canton.de

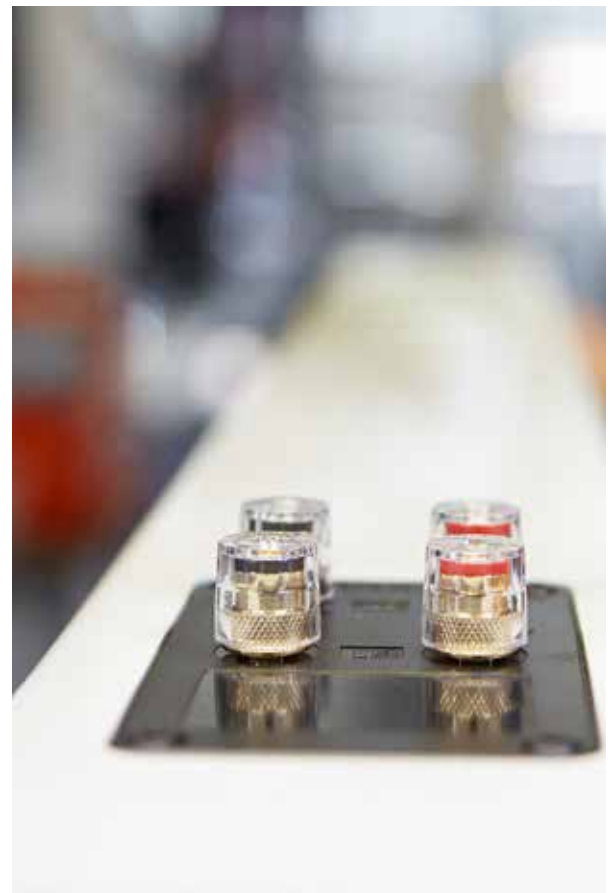
CANTON[®]
German loudspeaker tradition

GOOD SOUND IS OUR HERITAGE

Our family history reaches far back into the past, yet at the same time our modern development center is perfectly set up for the future. In Weilrod near Frankfurt, in the middle of the Taunus Mountains, we combine innovative technologies, premium quality and a wide range of models and designs – creating unique sound experiences in your home, in both music and home cinema.

SERVICE IS CLOSE TO OUR HEART

After production, every loudspeaker is put through its paces before being sent out into the world. Should something still go wrong, our service department is always quick to help. And we stand by the durability of our products – we can repair almost all of our models ever produced.





WE SAY HELLO!

Our loudspeakers have personality – just like each of our employees, who have made our company so special for so many years. Get to know some of the faces of our Canton family.

HEAD OF THE SOUND FAMILY

Since 1972 we have been inviting people to bring the best sound into their own homes with our products. From the outset this sound-based company has been family owned. Founder Günther Seitz and his son and Managing Partner Achim Seitz are making sure Canton will remain a family business into the future.

"Always being able to offer our customers the best service and rapid assistance – that's my priority."

Lukas Reiter
Head of Service at Canton



"Every day the international Canton team grows closer together. And every day we are delighted to bring people from all over the world closer to the Canton sound."

Anca Fernengel
Export Manager at Canton



"Since day 1 the Canton family has stood for quality. The high standards we set for ourselves do not just apply to our products but also to our communication with our retailers."

Thomas Valder
Senior Sales Manager and 18 years at Canton



WITH TRADITION INTO THE FUTURE

In the company's own in-house development center, Frank Göbl and his team use state-of-the-art technology and high-quality materials to hone the perfect sound. From the first computer simulation to the final surface finish, we are always looking for ways to match the music and your home even more closely. One of our recent technical innovations is the wave surround.





SMART

A smart network for good sound

Music accompanies us from our childhood onwards – and enriches our life whenever we hear our favorite pieces. In today's modern home the music that you love is now with you in every room: With smart networking you can allow your whole home to sing out – wherever you want it, with central controls and no compromise in terms of quality.



MULTI-ROOM OR SINGLE-ROOM
SMART HOME CINEMA
VERSATILE
QUICK TO CONNECT
EASY TO USE





Smart Vento 9

With 600 watt music output each, the Smart Vento 9 as a top of the range, active floorstanding loudspeaker has everything the heart of hi-fi enthusiasts desires: Modern features include wireless music transmission between Master and Slave with internal 24 bit signal processing, virtual surround sound and the opportunity of wireless extension to create a 4.0 set with the Smart Vento 9, Smart Vento 3 or Smart Soundbox 3 as rear loudspeakers. The ability to use the remote control to adjust settings such as distance, volume, equalizer, sleep timer and more, makes the Smart Vento 9 into the intelligent sound hero of any living room.

- Multi-channel sound formats: Dolby Audio™, DTS® Digital Surround™
- Transmission in CD quality via Bluetooth® wireless technology with Qualcomm® aptX™
- Multiple connection options: XLR (balanced), line, USB input with XMOS® technology, coaxial and optical digital input

Smart Vento 9	
Principle	Active floorstanding loudspeaker with wireless signal transmission
Music output	600 watt per loudspeaker
W x H x D	24.7 x 110 x 34 cm 24.7" x 43.3" x 13.4" 28.7 x 110 x 38 cm with base 11.3" x 43.3" x 14.9" with base
Weight	27 kg (pc)
Color	HG HG



Smart Vento 3

The compact active loudspeakers Smart Vento 3 with wireless connection between Master and Slave offer the same high quality functions as their big sister Smart Vento 9 – each with 350 watt music output. The multiple connection options and the wireless signal transmission make the smaller Smart Vento 3 the perfect loudspeaker set for a networked home, either as part of a home cinema setup or as a compact stereo system.

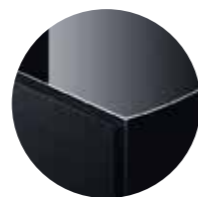
- Multi-channel sound formats: Dolby Audio™, DTS® Digital Surround™
- Transmission in CD quality via Bluetooth® wireless technology with Qualcomm® aptX™
- Multiple connection options: XLR (balanced), line, USB input with XMOS® technology, coaxial and optical digital input

Smart Vento 3	
Principle	Active compact loudspeaker with wireless signal transmission
Music output	350 watt per loudspeaker
W x H x D	22 x 40 x 30 cm 8.7" x 15.7" x 11.8"
Weight	9.1 kg (pc)
Color	HG HG

DOLBY AUDIO™



White lacquer "high gloss"
Black fabric grill



Black lacquer "high gloss"
Black fabric grill

Bluetooth™

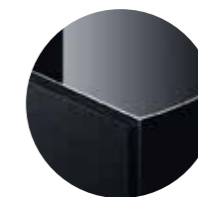
Qualcomm® aptX™

XMOS®

DOLBY AUDIO™



White lacquer "high gloss"
Black fabric grill



Black lacquer "high gloss"
Black fabric grill

Bluetooth™

Qualcomm® aptX™

XMOS®





Smart Soundbar 10

The high performance Smart Soundbar 10 with integrated Dolby Atmos® brings intensive 3D home cinema sound into the living room. To ensure the full cinematic experience, the compact Smart Soundbar 10 also offers two Dolby Atmos® enabled loudspeakers, which send the sound upwards for a virtual room sound. Thanks to Chromecast built-in and Spotify Connect they can also be easily integrated into a multi-room setup and connected with other loudspeakers of the Smart series. For example, the Smart Soundbar 10 can be set up wirelessly with two Smart Soundbox 3 speakers as rear loudspeakers and a Smart Sub 8 as subwoofer.

- Multi-channel sound formats: Dolby Atmos®, DTS-HD®
- Virtual surround sound via Dolby Audio™ technology
- Connections: 3 x HDMI® in (3D, 4K, HDR), 1 x Out (ARC), optical, coax digital, analogue, SUB out, LAN
- Wireless transmission to other loudspeakers of the Smart series
- Canton Smart remote control included
- HDF cabinet with integrated wallmount
- Touch panel on the top for fast operation
- On-screen display (OSD) available on your TV

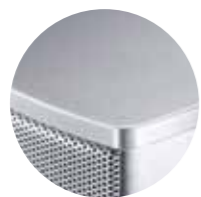


Smart Soundbar 10	
Principle	Multi-room Soundbar with Dolby Atmos®
Music output	300 watt
W x H x D	99 x 7 x 10 cm 38.9" x 2.7" x 3.9"
Weight	5.24 kg
Color	<input type="radio"/>  <input type="radio"/> 

DOLBY ATMOS

dts-HD

HDMI
HIGH-DEFINITION MULTIMEDIA INTERFACE



Silver lacquer, Silver glass
Silver metal grill



Black lacquer, Black glass
Black metal grill

Bluetooth



Chromecast built-in





Smart Soundbar 9

With the compact Smart Soundbar 9 not only can you take your television sound to a whole new level with 300 watt system output, but the loudspeaker can also be integrated into a multi-room setup: Thanks to Chromecast built-in and Spotify Connect the music can be streamed with ease on the Smart Soundbar 9 and controlled as a multi-room loudspeaker using the Google Home app. In addition, the Smart Soundbar 9 can also be set up wirelessly, for example, with two Smart Soundbox 3 speakers as rear loudspeakers and a Smart Sub 8 as a subwoofer – for a breathtaking home cinema experience.

- Multi-channel sound formats via Dolby Audio™, DTS® Digital Surround™
- Virtual surround sound via DTS® TruSurround® Post Processing
- Wireless transmission to other loudspeakers of the Smart series
- Connections: 3 x HDMI® in (3D, 4K, HDR), 1 x Out (ARC), optical, coax digital, analogue, SUB out, LAN
- Canton Smart remote control included
- HDF cabinet with integrated wallmount
- On-screen display (OSD) available on your TV



Smart Soundbar 9	
Principle	Multi-room Soundbar
Music output	300 watt
W x H x D	89 x 7 x 10 cm 35" x 2.7" x 3.9"
Weight	5.1 kg
Color	<input type="radio"/> <input checked="" type="radio"/>

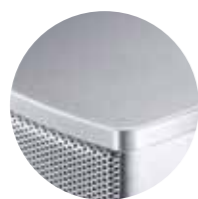
Smart Sub 8

The Smart Sub 8 supplies the bass foundation in the multi-room setup of the new Smart family: The compact downfire subwoofer in cube form can be connected easily and wirelessly with all products of the Smart series. The 200 watt digital amplifier with 8 inch chassis conjures up deep tones for any music and home cinema enjoyment. For example, it can amplify the bass foundation of the Smart Soundbar 9 or Smart Soundbar 10 – for even more shivers down your spine.



Smart Sub 8	
Principle	Wireless subwoofer
Music output	200 watt
W x H x D	27 x 33 x 27 cm 10.6" x 12.9" x 10.6"
Weight	8.4 kg
Color	<input type="radio"/> <input checked="" type="radio"/>

DOLBY AUDIO™



Silver lacquer, Silver glass
Silver metal grill



Black lacquer, Black glass
Black metal grill

Bluetooth™



Chromecast built-in



Silver lacquer semi-gloss



Black lacquer semi-gloss



Smart Soundbox 3

Chromecast built-in, Spotify Connect and controllable via Wi-Fi® using the Google Home app – these are the key features of the multi-room loudspeaker Smart Soundbox 3. With a system output of 120 watt and versatile connection and use options, the active smart loudspeaker is a great choice for any room – on its own, stereo with another Smart Soundbox 3 or as part of a larger set.

- Touch panel with buttons for Volume, Play/Pause and quick saving and loading of your favorite playlist
- Additional LAN connection at the back for an even more stable connection with the home network
- Further connection options: Integrated Bluetooth® wireless technology and AUX-In on the back
- From HighRes audio to MP3 – compatible with all current music formats and streaming services supported by Chromecast built-in
- The loudspeaker can be fully controlled using the touch panel and the Google Home app with no remote control
- The Smart Soundbox 3 can be operated via the Canton Smart remote control (available separately)

Smart Soundbox 3

Principle	Multi-room loudspeaker
Music output	120 watt
W x H x D	12 x 21 x 12 cm 4.7" x 8.3" x 4.7"
Weight	2 kg
Color	<input type="radio"/> <input checked="" type="radio"/>



White lacquer semi-gloss
White metal grill



Black lacquer semi-gloss
Black metal grill



Chromecast built-in

PORTABLE BLUETOOTH® LOUDSPEAKER

For portable music enjoyment

Listening to music completely without wires is the future of hi-fi – and it is already here. Modern methods of transmission such as Bluetooth® wireless technology meet even the high standards of sophisticated hi-fi listeners. Whether you are at home or out and about, you will be delighted with the superb sound of our portable, wireless loudspeakers.





musicbox S
 W x H x D
 24.5 x 14 x 5.5 cm
 9.7" x 5.5" x 2.2"
 Color
 ● ●

musicbox XS
 W x H x D
 18.5 x 5.5 x 6.3 cm
 7.3" x 2.2" x 2.5"
 Color
 ● ●



MUSICBOX

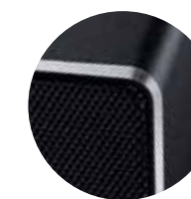
The world of music has changed drastically with MP3s and downloads. Nevertheless, the same rules still apply for speakers: when it comes to good, it all depends on the technology.

Our portable Bluetooth® speakers unify state-of-the-art technology with ease of use and elegant design. They deliver that irreplicable Canton sound when and wherever you want it. You can even connect two of our musicboxes in stereo or party mode.

- User-friendly voice announcement
- Bluetooth® standard 4.0
- 10 meter range
- Qualcomm® aptX™
- Near Field Communication
- True Wireless mode
- Line-In
- Plays up to 10/18 hrs
- High-quality aluminum cabinet



Titanium anodized semi-gloss
 Black metal grill



Black lacquer anodized semi-gloss
 Black metal grill



HIFI

Let the music touch your heart

Every living room deserves good sound – and the right loudspeakers for your own four walls can fill any room with fantastic sound. Whether you tend to look for purist classics or the functions of modern digital wonders – we have the perfect loudspeaker for your home.





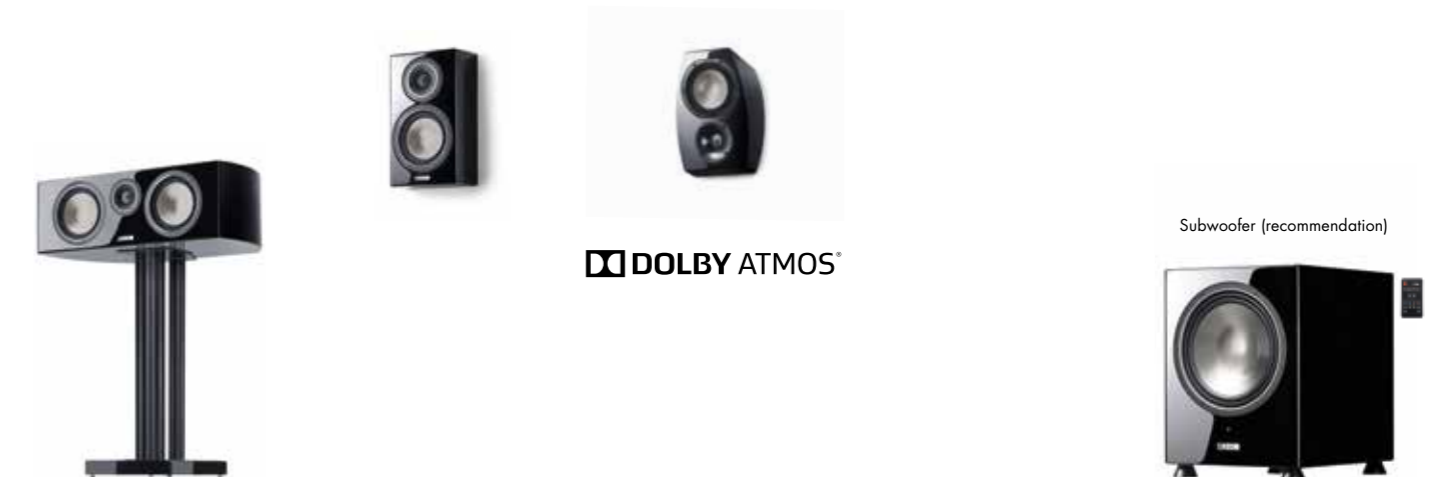
VENTO .2

Along with the first-rate tweeter system made from ceramic and high-fidelity titanium membranes, the Vento .2 series also offers a new look with modern screw-free diamond-cut aluminum rings. In the bass areas, the large freestanding loudspeakers boast a double cone membrane with a continuous surface, which works together with the larger cabinet size and a more powerful version of the curved form to give an even greater and more detailed sound.

- Ceramic tweeter system
- Titanium woofers and midrange speakers
- Wave-surround technology
- Screw-free, diamond-cut aluminum rings
- High-quality connection terminals
- Conical black spacers
- New and modern base construction with elegant bevels
- Fabric cover with magnetic fastening
- High gloss cabinet surface
- Matching speaker stand: LS 850.3
- Suitable Dolby Atmos® enabled loudspeaker: AR-800



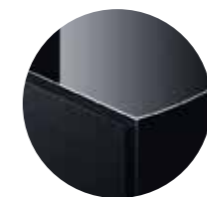
Vento 896.2 DC	Vento 886.2 DC	Vento 876.2 DC	Vento 836.2	Vento 826.2
W x H x D 28.7 x 110 x 38 cm 11.3" x 43.3" x 14.9"	W x H x D 26 x 102.5 x 34 cm 10.2" x 40.3" x 13.4"	W x H x D 23.5 x 95 x 31 cm 9.2" x 37.4" x 12.2"	W x H x D 22 x 36 x 30 cm 8.7" x 14.2" x 11.8"	W x H x D 19.5 x 30 x 27 cm 7.7" x 11.8" x 10.6"
Color HG HG HG	Color HG HG HG	Color HG HG	Color HG HG	Color HG HG



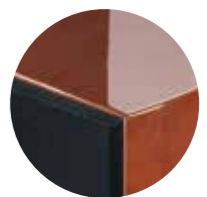
Vento 866.2 Center	Vento 816.2 OnWall	AR-800	SUB 1500 R
W x H x D 60 x 20 x 35 cm 23.6" x 7.9" x 13.8"	W x H x D 19.5 x 30 x 9 cm 7.7" x 11.8" x 3.5"	W x H x D 19.5 x 27 x 14.5 cm 7.7" x 10.6" x 5.7"	W x H x D 38 x 50.5 x 46 cm 15" x 19.9" x 18.1"
Color HG HG	Color HG HG	Color HG HG	Color HG HG



White lacquer "high gloss"
Black fabric grill



Black lacquer "high gloss"
Black fabric grill



Cherry veneer "high gloss"
Black fabric grill



Chrono SL 596.2 DC	Chrono SL 586.2 DC	Chrono SL 536.2	Chrono SL 526.2	Chrono SL 556.2 Center
W x H x D 27 x 105 x 34 cm 10.6" x 41.3" x 13.4"	W x H x D 25 x 100 x 31 cm 9.8" x 39.4" x 12.2"	W x H x D 19 x 36 x 27 cm 7.5" x 14.2" x 10.6"	W x H x D 17 x 29.5 x 26 cm 6.7" x 7.7" x 10.2"	W x H x D 50 x 17 x 27 cm 19.7" x 6.7" x 10.6"
Color HG HG	Color HG HG	Color HG HG	Color HG HG	Color HG HG



DOLBY ATMOS

Subwoofer (recommendation)



Chrono SL 516.2 OnWall	AR-500	SUB 1500 R
W x H x D 17 x 29.5 x 9 cm 6.7" x 11.6" x 3.5"	W x H x D 17 x 26 x 14.5 cm 6.7" x 10.2" x 5.7"	W x H x D 38 x 50.5 x 46 cm 15" x 19.9" x 18.1"
Color HG HG	Color HG HG	Color HG HG

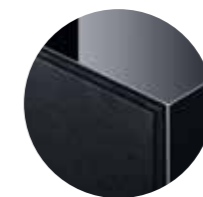
CHRONO SL .2

The new Chrono SL .2 has been given an even cleaner look thanks to its screw-free, diamond-cut aluminum rings: In combination with elaborately finish of the lacquered surfaces, the loudspeakers of this series are cut from the same cloth. The freestanding loudspeakers have a double cone membrane in the bass area with a continuous surface for a neat look. In addition, they generate more volume thanks to the greater depth of their cabinet.

- Aluminum-manganese tweeter system
- Titanium woofers and midrange speakers
- Wave-surround technology
- High-quality internal cabling
- Bi-wiring terminal
- Screw-free, diamond-cut aluminum rings
- Fabric cover with magnetic fastening
- High gloss cabinet surface
- Matching speaker stand: LS 650
- Suitable Dolby Atmos® enabled loudspeaker: AR-500



White lacquer "high gloss"
Black fabric grill



Black lacquer "high gloss"
Black fabric grill



CHRONO

The new Chrono series features the high quality titanium chassis from the Vento series in the midrange and bass area. The bass area of the freestanding loudspeakers Chrono 90 and Chrono 80 also use a new double cone membrane with continuous surface. The cabinets of the freestanding loudspeakers are now deeper; the large freestanding loudspeaker Chrono 90 in the new Chrono series has room for a larger bass chassis with a diameter of 200 mm. The flat base construction with rear-facing bass reflex opening makes the whole thing look like a new type of loudspeaker.

- Aluminum-manganese tweeter system
- Aluminum woofers and midrange speakers
- Wave-surround technology
- Black, screw-free loudspeaker rings
- Removable fabric cover
- Massive baffle in high gloss
- Cabinet surface with high quality structured foil in black
- Matching speaker stand: LS 660
- Suitable Dolby Atmos® enabled loudspeaker: AR-400



Chrono 90	Chrono 80	Chrono 70	Chrono 30	Chrono 20
W x H x D 27 x 105 x 34 cm 10.6" x 41.3" x 13.4"	W x H x D 25 x 100 x 30 cm 9.8" x 39.4" x 11.8"	W x H x D 25 x 95 x 28 cm 9.8" x 37.4" x 11"	W x H x D 19 x 36 x 27 cm 7.5" x 14.2" x 10.6"	W x H x D 17 x 29.5 x 26 cm 6.7" x 11.6" x 10.2"
Color HG HG	Color HG HG	Color HG HG	Color HG HG	Color HG HG



Chrono 50 Center	Chrono 10 OnWall	AR-400	SUB 10.4
W x H x D 50 x 17 x 27 cm 19.7" x 6.7" x 10.6"	W x H x D 17 x 29.5 x 9 cm 6.7" x 11.6" x 3.5"	W x H x D 17 x 26 x 14.5 cm 6.7" x 10.2" x 5.7"	W x H x D 27.5 x 38.2 x 42 cm 10.8" x 15" x 16.5"
Color HG HG	Color HG HG	Color HG HG	Color ○ ●



White decor
White lacquer "high gloss"
Black fabric grill



Black ash decor
Black lacquer "high gloss"
Black fabric grill



Ergo 690 DC	Ergo 670 DC	Ergo 620	Ergo 655 Center
W x H x D 23 x 105 x 30.5 cm 9.1" x 41.3" x 12"	W x H x D 21.5 x 95 x 28.5 cm 8.5" x 37.4" x 11.2"	W x H x D 20.5 x 34 x 27.5 cm 8.1" x 13.4" x 10.8"	W x H x D 53 x 20.5 x 28.5 cm 20.9" x 8.1" x 11.2"
Color ● ● ●	Color ● ● ●	Color ● ● ●	Color ● ● ●



SUB 650
W x H x D 36 x 48 x 50 cm 14.2" x 18.9" x 19.7"
Color ● ● ●

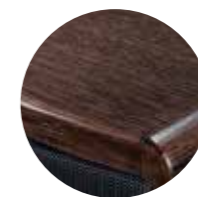
ERGO

Anyone looking for that classic hi-fi sound will find exactly what they want with the Ergo series. The timeless design with premium real-wood veneer, the metal grill front covers, the rounded cabinet corners typical of Ergo, and the classic chassis arrangement: tweeters and midrange at the top and massive bass at the bottom with bass reflex pipe facing out to the front.

- Aluminum-manganese tweeter system
- Aluminum woofers and midrange speakers
- Wave-surround technology
- High-quality internal cabling
- Bi-wiring terminal
- Metal grill front cover, removable
- Cabinets with real-wood veneer
- Matching speaker stand: LS 650



Cherry veneer
Black metal grill



Wenge veneer
Black metal grill



Black ash veneer
Black metal grill



GLE 496.2 BT	
Principle	3-way, bass reflex
Nominal/Music output	300 watt
Frequency range	22 ... 30,000 Hz
Crossover frequency	300/3.200 Hz
W x H x D	27 x 106 x 31 cm 10.7" x 42" x 12.2"
Weight	41 kg (Set)
Color	<input type="radio"/> <input checked="" type="radio"/> <input type="radio"/>

GLE 496.2 BT

Made for music and film pleasure: The high quality stereo active loudspeaker set with Bluetooth® wireless technology and integrated virtual surround sound with HDMI® technology is a genuine all-rounder for the living room: Thanks to its integrated amplifier, the GLE 496.2 BT is a compact solution and can be connected directly to the television. The set guarantees optimal speech intelligibility, an impressive spatial presence and powerful bass tones.

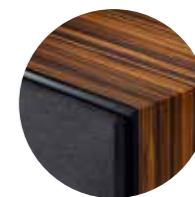
- 300 watt system output
- Master/slave principle
- Aluminium bass/midrange system
- No separate AV receiver required
- Aluminium-manganese tweeter system
- 3-way bass reflex system
- 3 HDMI inputs (with 3D, 4K), 1 HDMI output (with ARC)
- Optical and coaxial digital input, analogue cinch input
- Bluetooth® standard 3.0
- Loss-free transmission in CD quality via Qualcomm® aptX™ technology



White vinyl decor
White lacquer
Black fabric grill



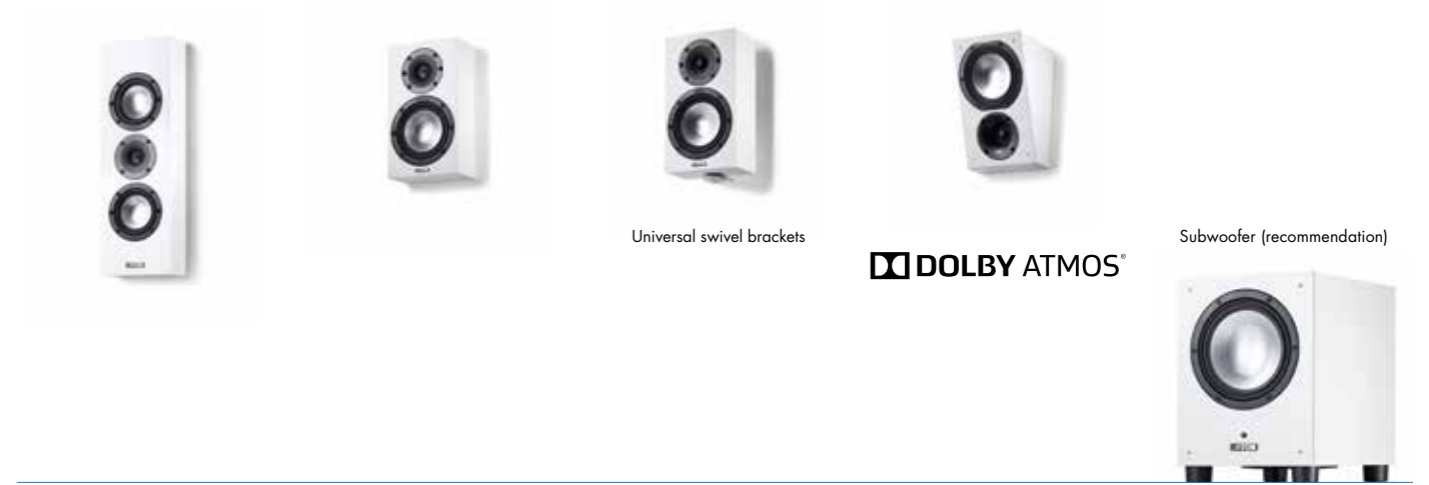
Black ash decor
Black lacquer
Black fabric grill



Makassar vinyl decor
Black lacquer
Black fabric grill



GLE 496.2	GLE 476.2	GLE 436.2	GLE 426.2	GLE 456.2 Center
W x H x D 21 x 106 x 31 cm 8.3" x 41.7" x 12.2"	W x H x D 19 x 96 x 29 cm 7.5" x 37.8" x 11.4"	W x H x D 19 x 36 x 28 cm 7.5" x 14.2" x 11"	W x H x D 17 x 29.5 x 27 cm 6.7" x 11.6" x 10.6"	W x H x D 45.5 x 17 x 31 cm 17.9" x 6.7" x 12.2"
Color <input type="radio"/> <input checked="" type="radio"/> <input type="radio"/>	Color <input type="radio"/> <input checked="" type="radio"/>	Color <input type="radio"/> <input checked="" type="radio"/>	Color <input type="radio"/> <input checked="" type="radio"/> <input type="radio"/>	Color <input type="radio"/> <input checked="" type="radio"/> <input type="radio"/>



GLE 417.2 OnWall	GLE 416.2 OnWall	GLE 416.2 Pro	AR-400	SUB 8.4
W x H x D 17 x 52 x 8.5 cm 6.7" x 20.5" x 3.3"	W x H x D 17 x 29.5 x 10 cm 6.7" x 11.6" x 3.9"	W x H x D 17 x 29.5 x 10 cm 6.7" x 11.6" x 5.7"	W x H x D 17 x 26 x 14.5 cm 6.7" x 10.2" x 5.7"	W x H x D 27.5 x 38.2 x 42 cm 10.8" x 15.1" x 16.5"
Color <input type="radio"/> <input checked="" type="radio"/>	Color <input type="radio"/> <input checked="" type="radio"/> <input type="radio"/>	Color <input type="radio"/> <input checked="" type="radio"/>	Color <input type="radio"/> <input checked="" type="radio"/>	Color <input type="radio"/> <input checked="" type="radio"/>

GLE.2

The external feature of the latest GLE.2 series is the new aluminium-manganese tweeter system, which is integrated in the matt varnished, 0.9" strong baffle. The combination of the sophisticated wave guide, new membrane material and appropriate crossover network now offers a reproduction of 20 to 40,000 Hz, making it the best GLE of all time (GLE 496.2).

The optical highlight is the bi-color design in Black-Macassar. This all makes our GLE series one of Europe's bestselling loudspeaker series.

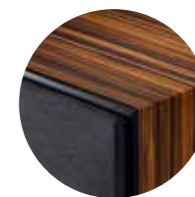
- Aluminium-manganese tweeter system
- Aluminium woofers and mid range speakers
- Wave-surround technology
- Polycarbonate speaker baskets
- Removable fabric cover
- Baffle in matt lacquer
- Cabinet in vinyl decor
- Matching speaker stand: LS 660
- Suitable Dolby Atmos® enabled loudspeaker: AR-400



White vinyl decor
White lacquer
Black fabric grill



Black vinyl decor
Black lacquer
Black fabric grill



Makassar vinyl decor
Black lacquer
Black fabric grill



CD 290.3	CD 250.3	CD 220.3
W x H x D 14 x 105 x 10 cm 5.5" x 42.3" x 3.9"	W x H x D 43 x 14 x 10 cm 16.9" x 5.5" x 3.9"	W x H x D 14 x 21.5 x 10 cm 5.5" x 8.5" x 3.9"
Color HG <input type="radio"/> <input checked="" type="radio"/>	Color HG <input type="radio"/> <input checked="" type="radio"/>	Color HG <input type="radio"/> <input checked="" type="radio"/>

Subwoofer (recommendation)



SUB 601
W x H x D 27 x 33.3 x 29.5 cm 10.6" x 13.1" x 11.6"
Color HG <input type="radio"/> <input checked="" type="radio"/>

CD

With its stylish oval cabinet shape, our CD series is extremely elegant. The slim appearance and high quality surfaces in brushed aluminum or "high-gloss" lacquer round off the modern, timeless look. Behind the neutral front cover in matching body color there is Canton technology with aluminum loudspeaker equipment. The freestanding loudspeakers also thrill listeners with a surprisingly powerful bass reproduction and do not require an additional subwoofer.

- Elegant column shape
- Timeless design
- High-quality aluminum cabinets
- Aluminum midrange-bass system
- Aluminum-manganese tweeter system
- Metal grill front cover
- Center speaker incl. wall mount
- Unobtrusive cabling in the base of the freestanding loudspeaker
- Small speaker incl. wall mount
- Matching speaker stands: LS 250.2, LS 90.2



White lacquer "high gloss"
White metal grill



Silver anodised aluminum
Silver metal grill



Black anodised aluminum
Black metal grill



SUBWOOFER

Our powerful, active subwoofers all follow the bass reflex principle and ensure a solid bass foundation in a compact design. Generous reverberation systems with aluminum or titanium speaker membranes combined with 3rd generation wave surround technology ensure precise mechanical performance. The room compensation technology, integrated in the larger models, allows the speakers to be adjusted to suit the acoustics of the room.

- Long throw woofer
- Dual compound aluminum membranes
- Down-firing bass reflex system
- High-quality digital amplifiers
- High and low-level inputs
- Massive cabinet construction
- Compact, timeless cube design
- ASF 75 SC with wall mount
- Pro SUB 180: Passive subwoofer for shops, restaurants and bars



SUB 1500 R	SUB 601	SUB 650
W x H x D 38 x 50.5 x 46 cm 15" x 19.9" x 18.1"	W x H x D 27 x 33.3 x 29.5 cm 10.6" x 13.1" x 11.6"	W x H x D 36 x 48 x 50 cm 14.2" x 18.9" x 19.7"
Color HG HG	Color HG HG	Color ● ● ●



SUB 12.4	SUB 10.4	SUB 8.4	Pro SUB 180	ASF 75 SC
W x H x D 36 x 47.5 x 50 cm 14.2" x 18.1" x 19.7"	W x H x D 32 x 43.5 x 45.5 cm 12.6" x 17.1" x 17.9"	W x H x D 27.5 x 38 x 42 cm 10.8" x 15.1" x 16.5"	W x H x D 18 x 38 x 40 cm 7.1" x 14.9" x 15.7"	W x H x D 43 x 15.5 x 41 cm 16.9" x 6.1" x 16.1"
Color ● ●	Color ● ●	Color ● ●	Color ● ●	Color ● ●



SUB 1500 R:
White lacquer "high gloss"
Black fabric grill



SUB 1500 R:
Black lacquer "high gloss"
Black fabric grill



SUB 12.4, 10.4, 8.4:
White vinyl decor
White lacquer semi-gloss
Black fabric grill



SUB 12.4, 10.4, 8.4:
Black vinyl decor
Black lacquer semi-gloss
Black fabric grill



HOME CINEMA

For impressive cinema sound at home

For an authentic cinematic experience in your own four walls you need more than a big television – as unfortunately many flat screen devices often produce a flat sound. With the right loudspeakers you can transform your living room into your own personal cinema! And the leading role is played by the home cinema super star from Canton.



DM 90.3
 W x H x D
 90 x 16 x 31.8 cm
 35.4" x 6.2" x 12.5"
 Color
 HG



DM 100
 W x H x D
 100 x 6.95 x 33 cm
 39.4" x 2.7" x 13"
 Color



DM 75
 W x H x D
 72.5 x 6.95 x 32 cm
 28.5" x 2.7" x 12.6"
 Color



DM 60
 W x H x D
 55 x 6.8 x 30 cm
 21.7" x 2.7" x 11.8"
 Color



DM 5
 W x H x D
 55 x 6.4 x 9 cm
 21.7" x 2.5" x 3.5"
 Color



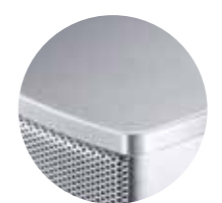
TV-SOUNDSYSTEM

It's hard to imagine a modern flatscreen TV without good speaker system. Our TV-Soundsystem range provides that perfect movie theater feeling along with excellent sound for music, all with minimal connection efforts. In addition to digital and analogue connections, all systems are equipped with Bluetooth® wireless technology and Qualcomm® aptX™ technology for the best possible wireless connection quality.

- Virtual 5.1 cinema experience
- Bluetooth® standard 4.0 with Qualcomm® aptX™ technology
- High-quality HDF cabinets
- Minimum cable requirement
- Sounddecks with integrated subwoofer
- DM 90.3 with HDMI® technology
- Can be operated via the TV remote control
- Soundbars with integrated wall mounts



White lacquer, White glass
White metal grill



Silver lacquer, Silver glass
Silver metal grill



Black lacquer, Black glass
Black metal grill



Black lacquer "high gloss"
Black metal grill



5.1 MOVIE

The ideal home cinema has six speakers: two front, two back, one center and a powerful active subwoofer. Whether it's a high-end system with two floorstanding speakers in the front, or a compact set like Movie 75 for smaller rooms: our wide range of surround solutions offers the right match for every need.

- Aluminum tweeter system
- Powerful active subwoofers
- Various home cinema systems for different room sizes
- Aluminum or polycarbonate cabinets
- Metal grill front cover
- Wall mount for center and surround speakers included
- Matching speaker stands: LS 90.2, LS 250.2



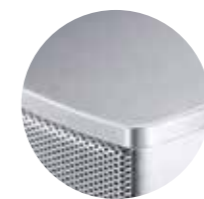
Movie 2050.3	Movie 2005.3	Movie 365	Movie 265	Movie 165
W x H x D	W x H x D	W x H x D	W x H x D	W x H x D
Front: 14.1 x 105 x 10.1 cm 5.5" x 41.3" x 3.9"	Front: 14.1 x 21.4 x 10.1 cm 5.5" x 8.4" x 3.9"	Front: 10.8 x 29 x 12.1 cm 4.3" x 11.4" x 4.8"	Front: 8.9 x 19.6 x 10.6 cm 3.5" x 7.7" x 4.2"	Front: 10.8 x 16 x 12.1 cm 4.3" x 6.3" x 4.8"
Center: 40 x 14.1 x 10.1 cm 15.7" x 5.5" x 3.9"	Center: 40 x 14.1 x 10.1 cm 15.7" x 4.2" x 8.3"	Center: 29 x 10.8 x 12.1 cm 11.4" x 4.3" x 4.8"	Center: 19.6 x 8.9 x 10.6 cm 7.7" x 4.2" x 3.5"	Center: 29 x 10.8 x 12.1 cm 11.4" x 10.8" x 4.8"
Surround: 14.1 x 21.4 x 10.1 cm 5.5" x 8.4" x 3.9"	Surround: 14.1 x 21.4 x 10.1 cm 5.5" x 8.4" x 3.9"	Surround: 10.8 x 29 x 12.1 cm 4.3" x 11.4" x 4.8"	Surround: 8.9 x 19.6 x 10.6 cm 3.5" x 7.7" x 4.2"	Surround: 10.8 x 16 x 12.1 cm 4.3" x 6.3" x 4.8"
Subwoofer: 27 x 33.1 x 29.5 cm 10.6" x 13" x 11.6"	Subwoofer: 27 x 33.1 x 29.5 cm 10.6" x 13" x 11.6"	Subwoofer: 24 x 41 x 42 cm 9.5" x 15.9" x 16.5"	Subwoofer: 24 x 41 x 42 cm 9.5" x 15.9" x 16.5"	Subwoofer: 24 x 41 x 42 cm 9.5" x 15.9" x 16.5"
Color <input type="radio"/> HG <input checked="" type="radio"/>	Color <input type="radio"/> HG <input checked="" type="radio"/>	Color <input type="radio"/> <input checked="" type="radio"/>	Color <input type="radio"/> <input checked="" type="radio"/>	Color <input type="radio"/> <input checked="" type="radio"/>



Movie 135	Movie 95	Movie 75
W x H x D	W x H x D	W x H x D
Front: 8.9 x 11.6 x 10.6 cm 3.5" x 4.6" x 4.2"	Front: 8.9 x 9 x 10.6 cm 3.5" x 3.5" x 4.2"	Front: 8.9 x 9 x 10.6 cm 3.5" x 3.5" x 4.2"
Center: 19.6 x 8.9 x 10.6 cm 7.7" x 3.5" x 4.2"	Center: 19.6 x 8.9 x 10.6 cm 7.7" x 3.5" x 4.2"	Center: 19.6 x 8.9 x 10.6 cm 7.7" x 3.5" x 4.2"
Surround: 8.9 x 11.6 x 10.6 cm 3.5" x 4.6" x 4.2"	Surround: 8.9 x 9 x 10.6 cm 3.5" x 3.5" x 4.2"	Surround: 8.9 x 9 x 10.6 cm 3.5" x 3.5" x 4.2"
Subwoofer: 24 x 41 x 42 cm 9.5" x 15.9" x 16.7"	Subwoofer: 24 x 41 x 42 cm 9.5" x 15.9" x 16.7"	Subwoofer: 23 x 38 x 42 cm 9.1" x 14.2" x 15.8"
Color <input type="radio"/> <input checked="" type="radio"/>	Color <input type="radio"/> <input checked="" type="radio"/>	Color <input checked="" type="radio"/> <input checked="" type="radio"/>



White lacquer semi-gloss
White metal grill



Silver lacquer semi-gloss
Silver metal grill



Black lacquer semi-gloss
Black metal grill



Black lacquer anodized
Black metal grill

PRO HOUSE

For a house full of sound

Whether inside or out, on the wall or in the ceiling – the sound has to be good everywhere. When you equip out your house with loudspeakers, there are many ways to combine musical pleasure and modern design in a way that is stylish and flexible with great sound.





INWALL AND INCEILING:

Which series will work best for you?



809 SERIES

Premium series
Metal grill with discreet white edges
Membrane material: Ceramic
Swivel ceramic tweeter system

Difference between the 809 and 909 series: same specs, different metal grill



909 SERIES

Premium series
Metal grill, frameless
Membrane material: Ceramic
Swivel ceramic tweeter system



403 SERIES

Entry level series
Baffle with broad, white edge
Membrane material: Polypropylene
Swivel soft-dome tweeters



805 SERIES

Mid-range series
Metal grill with discreet, white edges
Membrane material: Aluminum
Swivel aluminum tweeter system





403 SERIES

Designed for audio purists, the models of the 403 series are an excellent introduction to the world of Canton speakers. Its solid technology with a swivel mount soft dome tweeter allows the sound to be adapted to fit the environment. The long-throw polypropylene woofer system ensures high-volume durability.

- Swivel mount soft dome tweeter
- Adjustable levels
- Removable metal grill with Canton logo
- Polypropylene cone membrane
- Baffle with a wide white edge
- InCeiling 463 DT: single stereo, dual dome tweeter



InWall 483	InWall 443	InWall 443 LCR
W x H x D 26.8 x 37.2 x 11.4 cm 10.5" x 14.6" x 4.5"	W x H x D 18.3 x 26.4 x 7.6 cm 7.2" x 10.4" x 3"	W x H x D 18.3 x 39.3 x 7.6 cm 7.2" x 15.5" x 3"
Installation size 24 x 34.5 cm 9.4" x 13.6"	Installation size 15.5 x 23.5 cm 6.1" x 9.2"	Installation size 15.5 x 36.5 cm 6.1" x 14.4"
Installation depth 10.5 cm / 4.1"	Installation depth 6.7 cm / 2.6"	Installation depth 6.7 cm / 2.6"
Available accessories ER 8	Available accessories ER 4	Available accessories ER 4 LCR
Color <input type="radio"/>	Color <input type="radio"/>	Color <input type="radio"/>



InCeiling 483	InCeiling 463 DT	InCeiling 463	InCeiling 443
Diameter (Ø) 28.8 cm / 11.3"	Diameter (Ø) 23.8 cm / 9.4"	Diameter (Ø) 23.8 cm / 9.4"	Diameter (Ø) 20 cm / 7.9"
Installation size (Ø) 26 cm / 10.2"	Installation size (Ø) 21 cm / 8.1"	Installation size (Ø) 21 cm / 8.3"	Installation size (Ø) 17 cm / 6.7"
Installation depth 10 cm / 4"	Installation depth 8.5 cm / 3.3"	Installation depth 8.5 cm / 3.3"	Installation depth 7.3 cm / 2.9"
Color <input type="radio"/>	Color <input type="radio"/>	Color <input type="radio"/>	Color <input type="radio"/>



805 SERIES

Who can ask for anything more? A metal cover with a discreet frame invisibly held by magnets. An aluminum tweeter with adjustable angle and volume. A woofer system with aluminum speaker cone and powerful magnetic drive. Those are the ingredients that go into the InWall and InCeiling of the 805 series.

- Swivel mount aluminum tweeter
- Aluminum cone membrane
- Adjustable levels
- Un-framed baffle
- Metal cover with discreet frame
- Front cover with magnetic fastening
- InCeiling 865 DT: single stereo, dual dome tweeter
- InCeiling 845-16: Ceiling speakers with 16 ohm impedance



InWall 885	InWall 865	InWall 845	InWall 845 LCR	InCeiling 845 SQ
W x H x D 27.5 x 37.9 x 10.2 cm 10.8" x 14.9" x 4"	W x H x D 23.6 x 33 x 9.2 cm 9.3" x 13" x 3.6"	W x H x D 19 x 27 x 7.5 cm 7.5" x 10.6" x 3"	W x H x D 19 x 40 x 7.5 cm 7.5" x 15.6" x 3"	W x H x D 19 x 19 x 8.5 cm 7.5" x 7.5" x 3.4"
Installation size 23.5 x 34.5 cm 9.2" x 13.6"	Installation size 20 x 29.5 cm 7.9" x 11.6"	Installation size 15.5 x 23.5 cm 6.1" x 9.2"	Installation size 15.5 x 36.5 cm 6.1" x 14.4"	Installation size (∅) 15 cm / 5.9"
Installation depth 9.9 cm / 3.9"	Installation depth 8.5 cm / 3.3"	Installation depth 7 cm / 2.7"	Installation depth 7 cm / 2.7"	Installation depth 7.8 cm / 3"
Available accessories ER 8 WFB 800	Available accessories ER 6 WFB 650	Available accessories ER 4	Available accessories ER 4 LCR	
Color <input type="radio"/>	Color <input type="radio"/>	Color <input type="radio"/>	Color <input type="radio"/>	Color <input type="radio"/>



16 ohm loudspeaker

InCeiling 885	InCeiling 865 DT	InCeiling 865	InCeiling 845	InCeiling 845-16
Diameter (∅) 28.5 cm / 11.2"	Diameter (∅) 24.5 cm / 9.6"	Diameter (∅) 24.5 cm / 9.6"	Diameter (∅) 19 cm / 7.5"	Diameter (∅) 19 cm / 7.5"
Installation size (∅) 25 cm / 9.8"	Installation size (∅) 21 cm / 8.26"	Installation size (∅) 21 cm / 8.26"	Installation size (∅) 15.5 cm / 6.1"	Installation size (∅) 15.5 cm / 6.1"
Installation depth 9.5 cm / 3.7"	Installation depth 9 cm / 3.5"	Installation depth 8.6 cm / 3.4"	Installation depth 7.6 cm / 3"	Installation depth 7.6 cm / 3"
Color <input type="radio"/>	Color <input type="radio"/>	Color <input type="radio"/>	Color <input type="radio"/>	Color <input type="radio"/>



809 SERIES

The 809 series is for connoisseurs who like a discreetly framed metal cover, but prefer the technology of ceramic cones. They combine the look of the 805 series with the technology of our premium models. Used in combination with elements of the 805 series, they can set acoustic highlights in strategic locations while still maintaining an overall uniform design.

- Swivel mount ceramic tweeter
- Ceramic cone membrane
- Adjustable levels
- Un-framed baffle
- Metal cover with discreet frame
- Front cover with magnetic fastening
- InCeiling 849-16: Ceiling speakers with 16 ohm impedance
- InCeiling 855 T series: Loudspeaker with 100 V/70 V transformer



InWall 889	InWall 869	InWall 849	InWall 849 LCR	InCeiling 889
W x H x D 27.5 x 37.9 x 10.3 cm 10.8" x 15" x 4"	W x H x D 23.6 x 33 x 9.2 cm 9.3" x 13" x 3.6"	W x H x D 19 x 27 x 7.5 cm 7.5" x 10.6" x 3"	W x H x D 19 x 40 x 7.5 cm 7.5" x 15.8" x 3"	Diameter (∅) 28.5 cm / 11.2"
Installation size 23.5 x 34.5 cm 9.2" x 13.6"	Installation size 20 x 29.5 cm 7.9" x 11.6"	Installation size 15.5 x 23.5 cm 6.1" x 9.2"	Installation size 15.5 x 36.5 cm 6.1" x 14.4"	Installation size (∅) 25 cm / 9.8"
Installation depth 9.9 cm / 3.9"	Installation depth 8.5 cm / 3.4"	Installation depth 7 cm / 2.7"	Installation depth 7 cm / 2.7"	Installation depth 9.5 cm / 3.8"
Available accessories ER 8	Available accessories ER 6 WFB 650	Available accessories ER 4	Available accessories ER 4 LCR	
Color <input type="radio"/>	Color <input type="radio"/>	Color <input type="radio"/>	Color <input type="radio"/>	Color <input type="radio"/>



16 ohm loudspeaker



100 V loudspeaker



100 V loudspeaker



100 V loudspeaker

InCeiling 869	InCeiling 849-16	InCeiling 855 T	InCeiling 855 T-BC 7	InCeiling 855 T-BC 15
Diameter (∅) 24.5 cm / 9.6"	Diameter (∅) 19 cm / 7.5"	Diameter (∅) 29 cm / 11.4"	Diameter (∅) 29 cm / 11.4"	Diameter (∅) 29 cm / 11.4"
Installation size (∅) 21 cm / 8.3"	Installation size (∅) 15.5 cm / 6.1"	Installation size (∅) 27 cm / 10.6"	Installation size (∅) 27 cm / 10.6"	Installation size (∅) 27 cm / 10.6"
Installation depth 9 cm / 3.5"	Installation depth 7.6 cm / 3"	Installation depth 11.5 cm / 4.5"	Installation depth 11.5 cm / 4.5"	Installation depth 22.5 cm / 8.9"
Color <input type="radio"/>	Color <input type="radio"/>	Color <input type="radio"/>	Color <input type="radio"/>	Color <input type="radio"/>



InWall 989	InWall 969	InWall 949	InWall 949 LCR
W x H x D 26.3 x 36.7 x 10.3 cm 10.4" x 14.5" x 4"	W x H x D 22.4 x 31.8 x 9.2 cm 8.8" x 12.5" x 3.6"	W x H x D 17.8 x 25.8 x 7.5 cm 7" x 10.2" x 3"	W x H x D 17.8 x 38.8 x 7.5 cm 7" x 15.3" x 3"
Installation size 23.5 x 34.5 cm 9.2" x 13.6"	Installation size 20 x 29.5 cm 7.8" x 11.6"	Installation size 15.5 x 23.5 cm 6.1" x 9.2"	Installation size 15.5 x 36.5 cm 6.1" x 14.4"
Installation depth 9.6 cm / 13.8"	Installation depth 8.5 cm / 3.4"	Installation depth 7 cm / 2.7"	Installation depth 7 cm / 2.7"
Available accessories ER 8 WFB 800	Available accessories ER 6 WFB 650	Available accessories ER 4	Available accessories ER 4 LCR
Color <input type="radio"/>	Color <input type="radio"/>	Color <input type="radio"/>	Color <input type="radio"/>

Splash-proof

909 SERIES

Like all of our built-in speakers, the models in our 909 series are 2-way systems and round out our spectrum of built-in wall and ceiling speakers. The series boasts reference technology, high-quality ceramic membranes and elegant, un-framed front cover grills.

- Swivel mount ceramic tweeter
- Ceramic cone membrane
- Adjustable levels
- Un-framed baffle
- Frameless metal grill
- Front cover with magnetic fastening
- InCeiling 969 Pro: Splash-proof and suitable for use in wet environments

InCeiling 989	InCeiling 969	InCeiling 949	InCeiling 969 Pro
Diameter (Ø) 27.3 cm / 10.8"	Diameter (Ø) 23.2 cm / 9.1"	Diameter (Ø) 17.7 cm / 7"	Diameter (Ø) 23.2 cm / 9.1"
Installation size (Ø) 25 cm / 9.8"	Installation size (Ø) 21 cm / 8.3"	Installation size (Ø) 15.5 cm / 6.1"	Installation size (Ø) 21 cm / 8.3"
Installation depth 9.5 cm / 3.8"	Installation depth 9 cm / 3.5"	Installation depth 7.6 cm / 3"	Installation depth 9 cm / 3.5"
Color <input type="radio"/>	Color <input type="radio"/>	Color <input type="radio"/>	Color <input type="radio"/>



ATELIER

The slim speakers in our Atelier series are only 3.9" deep and have an integrated wall mount, making them perfect for hanging on the wall. If you want to make them even more discreet, you can install them into the wall using the included installation kit. This makes them even slimmer, with the speakers protruding only 0.8" from the surface of the wall. All you see is the classic white fabric cover with a matte satin white frame.

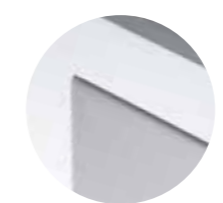
- Aluminum-manganese tweeter system
- Cone systems with aluminium membranes
- Slim cabinet design
- Integrated wall mount for OnWall installation
- Mounting Kit for InWall installation
- Depth: < 3.9"
- Removable decorative frame
- Removable fabric cover



Atelier 1100	Atelier 900	Atelier 700	Atelier 500	Atelier 300
W x H x D 32.5 x 115 x 9.6 cm 12.8" x 45.3" x 3.8"	W x H x D 24.5 x 95 x 8.5 cm 9.7" x 37.5" x 3.4"	W x H x D 26 x 75 x 9.8 cm 10.2" x 29.5" x 3.9"	W x H x D 22 x 57 x 8.8 cm 8.7" x 22.4" x 3.5"	W x H x D 33 x 33 x 8.8 cm 13" x 13" x 3.5"
Color <input type="radio"/> <input checked="" type="radio"/>	Color <input type="radio"/> <input checked="" type="radio"/>	Color <input type="radio"/> <input checked="" type="radio"/>	Color <input type="radio"/> <input checked="" type="radio"/>	Color <input type="radio"/> <input checked="" type="radio"/>



Atelier 1150 Center	Atelier 950 Center	Atelier 750 Center	Atelier 550 Center
W x H x D 115 x 32.5 x 9.6 cm 45.3" x 12.8" x 3.8"	W x H x D 95 x 24.5 x 8.5 cm 37.5" x 9.7" x 3.4"	W x H x D 75 x 26 x 9.8 cm 29.5" x 10.2" x 3.9"	W x H x D 57 x 22 x 8.8 cm 22.4" x 8.7" x 3.5"
Color <input type="radio"/> <input checked="" type="radio"/>	Color <input type="radio"/> <input checked="" type="radio"/>	Color <input type="radio"/> <input checked="" type="radio"/>	Color <input type="radio"/> <input checked="" type="radio"/>



White semi-gloss
White fabric grill



Black semi-gloss
Black fabric grill



AM 5

Application: Active monitor
 Principle: 2-way, bass reflex system
 Duration/Peak output: 80 / 100 watt
 Maximum sound pressure: 97 dB SPL
 Frequency range: 50...38,000 Hz
 Crossover frequency: 3,000 Hz
 Bass chassis: 1 x 4.5", aluminium
 Aluminium tweeter chassis: 1 x 1", aluminium
 High-pass filter: 50 Hz, 70 Hz, 100 Hz
 Treble adjustment: + 2 dB, 0 dB, - 2 dB
 Midrange adjustment: 0 dB, - 2 dB, - 4 dB
 Bass adjustment: + 2 dB, 0 dB, - 2 dB
 SNR: 95 dB

W x H x D
 14 x 24 x 16 cm
 5.5" x 9.5" x 6.3"

Color

ACTIVE MONITOR AM 5

The active AM 5 is a professional studio monitor, effective PC solution and sophisticated TV loudspeaker in one. The intelligent loudspeaker concept, first class components and meticulous workmanship enable it to provide genuine high-end sound for entry level enthusiasts and professionals alike. It can be used as a Plug&Play solution or adapted to suit individual requirements.

- Aluminum tweeter system
- Neodyn magnet drive
- 80 watts output power
- Symmetric XLR input
- Universal cinch input
- Switchable high pass filter
- Switchable input sensitivity
- Switchable sound settings
- Usable with Cantomount AM wall mount



White lacquer semi-gloss
White metal grill



Black lacquer semi-gloss
Black metal grill



Plus XL.3	Plus X.3	Plus MX.3
W x H x D 15 x 23.5 x 15.5 cm 5.9" x 9.3" x 6.1"	W x H x D 12 x 19.5 x 13 cm 4.7" x 7.7" x 5.1"	W x H x D 9 x 11.5 x 10 cm 3.5" x 4.5" x 3.9"
Color <input type="radio"/> <input checked="" type="radio"/>	Color <input type="radio"/> <input checked="" type="radio"/>	Color <input checked="" type="radio"/> <input checked="" type="radio"/>



Pro XL.3	Pro X.3	Pro SUB 180
W x H x D 15 x 23.5 x 15.5 cm 5.9" x 9.3" x 6.1"	W x H x D 12 x 19.5 x 13 cm 4.7" x 7.7" x 5.1"	W x H x D 18 x 38 x 40 cm 7.1" x 14.9" x 15.7"
Color <input type="radio"/> <input checked="" type="radio"/>	Color <input type="radio"/> <input checked="" type="radio"/>	Color <input type="radio"/> <input checked="" type="radio"/>

SPECIAL LOUDSPEAKERS

Every loudspeaker has its perfect area of application. Our special loudspeakers have many such areas. Anyone looking for high quality but compact passive loudspeakers for the wall will find the right solution in our Plus series. The robust Pro series is suitable for use in damp environments while its screw-in universal bracket also enables it to be mounted on the ceiling. The CD series is noted for its elegant shapes and high quality aluminium cabinet.

- Aluminum tweeter system
- Compact alternative in hi-fi quality
- Pro series: ideal for outdoor use
- Cone systems with aluminium membrane
- Plus series: Suitable wall mounts Cantomount and Cantomount U
- Pro series: with swivelling universal bracket
- Robust metal grill as front cover
- Pro SUB 180: Suitable for wall mounting
- Pro series: moisture-resistant, rust-free aluminium grill



White lacquer semi-gloss
White metal grill

White lacquer "high-gloss"
White metal grill

Black lacquer semi-gloss
Black metal grill

Black lacquer "high-gloss"
Black metal grill



LS 850.3	LS 660	LS 250.2	LS 90.2
Height 61 cm / 24"	Height 62 cm / 24.4"	Height 104 cm / 40.9"	Height 88 cm / 34.7"
Works with: Vento 826.2 Vento 836.2 Vento 866.2 Center	Works with: Chrono 20 Chrono 30 Chrono 50 Center Chrono SL 526.2 Chrono SL 536.2 Chrono SL 556.2 Center GLE 426.2 GLE 436.2 GLE 456.2 Center	Works with: CD 220.3	Works with: Movie 75 Movie 95 Movie 135 Movie 165 Plus MX.3
Color HG HG	Color HG HG	Color ●	Color ●

ACCESSORIES

A wide selection of loudspeaker stands rounds off the Canton range. Here you can find the right solution for all compact loudspeakers, most center speakers and the satellites of our movie systems, allowing you to position them at will. For all small loudspeakers where a wall mount is not included, an appropriate wall mount from the Cantomount series is available from our accessories range.

Speaker stands

- Cable hiding solutions
- Adjustable floor spikes
- Plate with mounting holes

Cantomount

- Stable and solid
- Pivot mount
- Including fixtures



Cantomount AM	Cantomount U
W x H x D 8 x 7.8 x 6.6 cm 3.2" x 3.1" x 2.6"	W x H x D 4.5 x 8 x 10 cm 1.8" x 3.1" x 3.9"
Works with: AM 5	Works with: Smart Soundbox 3 AM 5 Plus XL.3 Pro XL.3
Color ●	Color ○ ●



CAR HI-FI – CANTON SOUND SYSTEM FOR ŠKODA KODIAQ, KAROQ, SUPERB AND OCTAVIA

In close collaboration with ŠKODA we have developed a premium sound system that is available as an optional feature for the models ŠKODA Kodiaq, Karoq, Superb and Octavia. Each system is adapted to suit the individual vehicle model.

The Canton sound systems for ŠKODA combine active noise reduction technology with premium virtual surround sound to create balanced acoustics for all types of music.



Canton Sound Tuning

Precise adjustment for all seating positions:
The focus of the sound can be adjusted individually.



Canton Noise Cancellation

The system dynamically balances out driving noise –
wherever you happen to be travelling.



Canton Equaliser

Crystal clear sound: The Canton Equaliser creates
optimum acoustics for music, telephone and navigation.

You can find more information about the Canton sound systems for ŠKODA on our website
www.canton.de/en/skoda-en



KODIAQ

1 x center loudspeaker
2 x bass/midrange speakers
subwoofer
4 x tweeters
2 x bass speakers
DSP amplifier

KAROQ

1 x center loudspeaker
2 x bass/midrange speakers
4 x tweeters
subwoofer
DSP amplifier



SUPERB

1 x center loudspeaker
2 x bass/midrange speakers
4 x tweeters
2 x bass speakers
2 x midrange speakers
subwoofer
DSP amplifier

OCTAVIA

1 x center loudspeaker
2 x bass/midrange speakers
4 x tweeters
2 x bass speakers
subwoofer
DSP amplifier



WELCOME HOME
Now let the music play





NEW: THE CANTON LISTENING ROOMS!

Whether you're interested in freestanding loudspeakers, home cinema systems or smart sound solutions – ultimately you have to be convinced by the sound. So we invite you to see and hear all our current loudspeakers live – in our new listening rooms at Weilrod in the Taunus Mountains, around 40 minutes' drive from Frankfurt am Main.

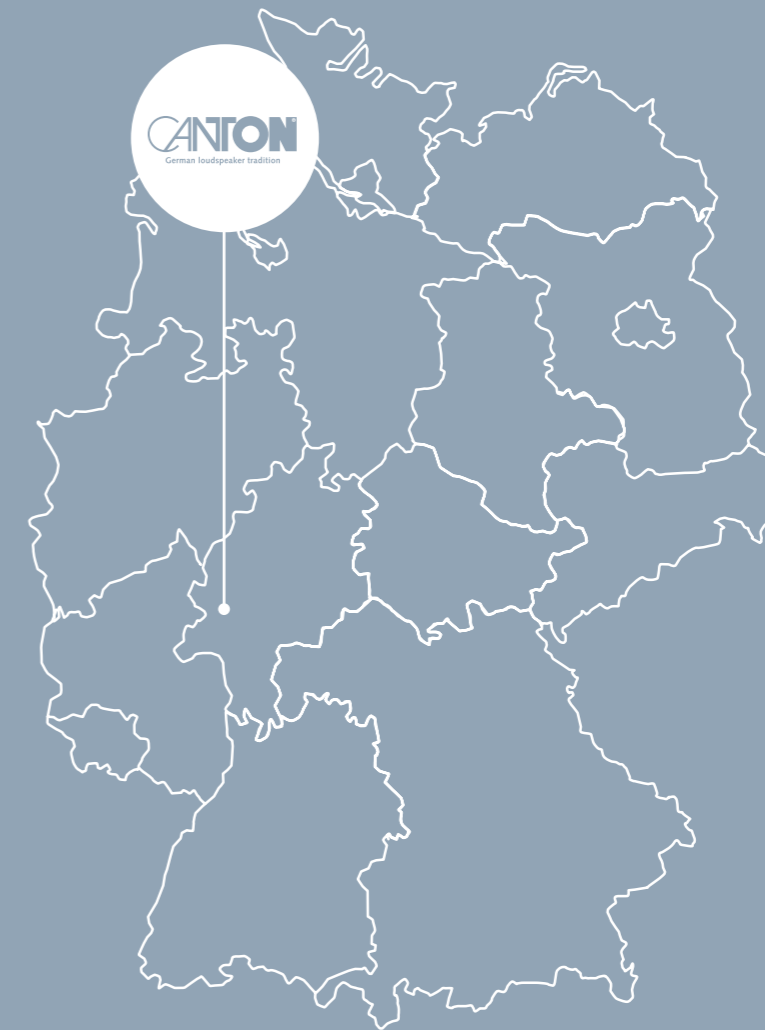
The acoustically optimized rooms – one for stereo setups, one for home cinema – are equipped with high quality electronics and first rate amplifiers: the perfect way to listen and objectively compare your chosen loudspeakers as you relax with a cup of coffee. One of our staff members will personally guide you through the various products and answer any questions you may have.

If you would like to visit our listening rooms you can arrange an appointment online at www.canton.de/en/showrooms or by phone at +49 (0) 6083 287 87. We look forward to welcoming you.



WELCOME TO THE FAMILY

Our homes are full of music – and it is at home within where music sounds best. Music is an essential part of family life, and naturally this includes the Canton family. Since 1972 we have been continually working on developing the best loudspeakers for every taste and every budget in order to always fill every home with the best sound.



WHERE TO FIND US

Canton Elektronik GmbH + Co. KG

Neugasse 21–23
61276 Weilrod
Germany

Product advice: +49 (0) 6083 287 77
Service Hotline: +49 (0) 6083 287 87

Fax: +49 (0) 6083 287-50

E-Mail: info@canton.de

More information and our online shop
can be found on our website

www.canton.de



Speaker stands are accessories and not included. Changes to the information provided, in particular technical changes, and errors cannot be ruled out.

Google, Google Home, Chromecast built-in and other related marks are trademarks of Google LLC.

Manufactured under license from Dolby Laboratories. Dolby, Dolby Atmos, Dolby Audio, and the double-D symbol are trademarks of Dolby Laboratories.

Manufactured under license from DTS Licensing Limited. DTS, the Symbol, DTS and the Symbol together, DTS-HD, the DTS-HD logo, Digital Surround, and TruSurround are registered trademarks and/or trademarks of DTS, Inc. in the United States and/or other countries. © DTS, Inc. All Rights Reserved.

Qualcomm is a trademark of Qualcomm Incorporated, registered in the United States and other countries, used with permission. aptX is a trademark of Qualcomm Technologies International, Ltd., registered in the United States and other countries, used with permission.

Spotify Connect feature requires Spotify Premium subscriptions. Spotify Connect feature may not be used in countries where Spotify service is not available. The Spotify software is subject to third party licenses found here: <http://www.spotify.com/connect/third-party-licenses>

The Bluetooth® word mark and logos are registered trademarks owned by the Bluetooth® SIG, Inc. and any use of such marks by Canton is under license. Other trademarks and trade names are those of their respective owners.

The terms HDMI and HDMI High-Definition Multimedia Interface, and the HDMI Logo are trademarks or registered trademarks of HDMI LLC in the United States and other countries.

XMOS and the XMOS logo are registered trademarks of XMOS Limited in the United Kingdom and other countries.